

PROJECT:	Criculators	UNIT TAG:	_____	QUANTITY:	1
REPRESENTATIVE:	Hurley Engineering	TYPE OF SERVICE:	Recirculation	DATE:	_____
ENGINEER:	TBD	SUBMITTED BY:	Devin Carle	DATE:	_____
CONTRACTOR:	TBD	APPROVED BY:	_____	DATE:	_____
		ORDER NO.:	_____	DATE:	_____

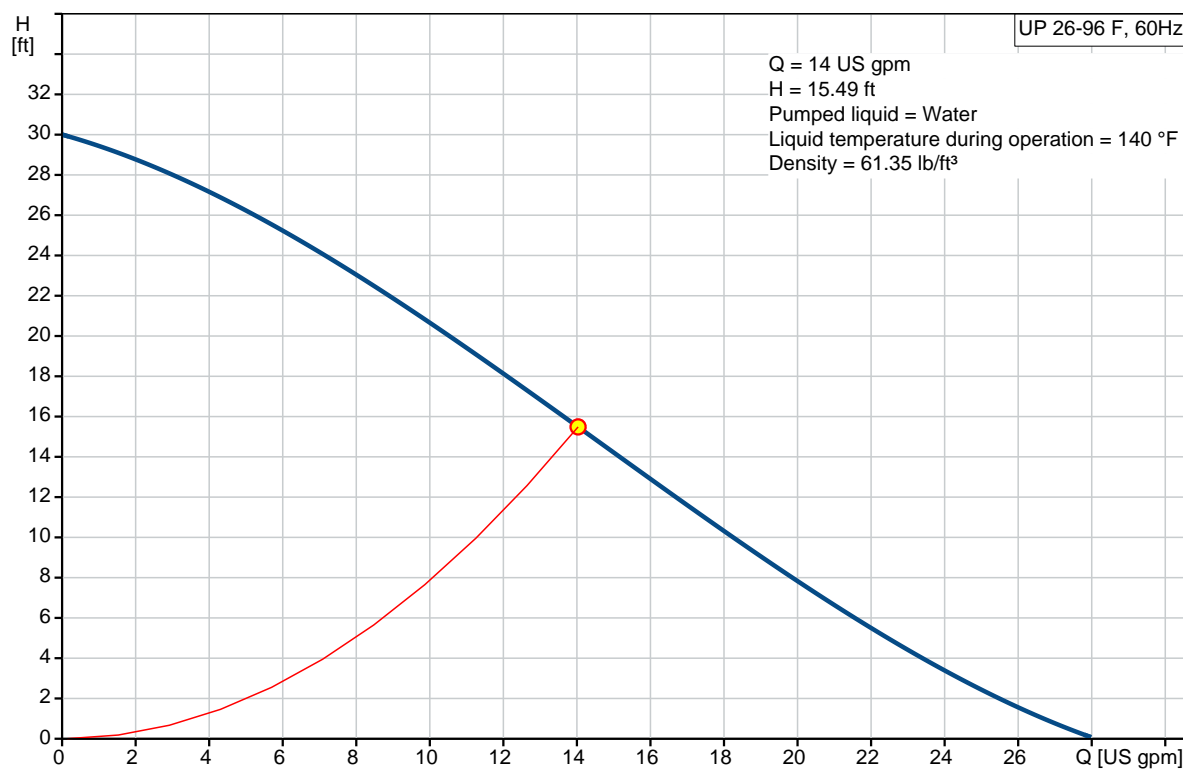


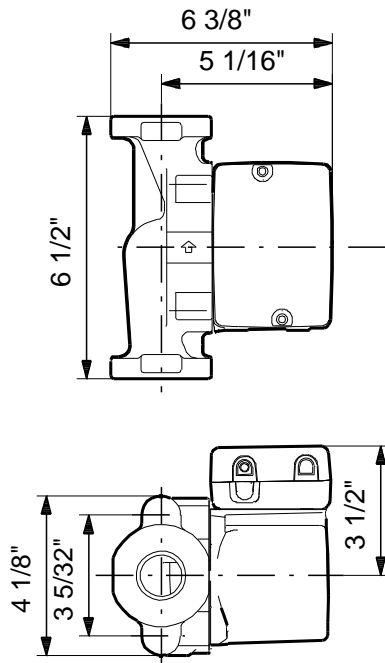
UP 26-96 F

Circulator pumps

Product photo could vary from the actual product


Conditions of Service	Pump Data	Motor Data
Flow: 14 US gpm	Maximum operating pressure: 145.04 psi	Max. power input: 205 W
Head: 15.49 ft	Liquid temperature range: 35.6 .. 230 °F	Rated voltage: 115 V
Efficiency: _____	Maximum ambient temperature: 104 °F	Main frequency: 60 Hz
Liquid: Water	Approvals: UL, CSA	Insulation class: F
Temperature: 140 °F	Type of connection: C.I. Flange	Motor protection: CONTACT
NPSH required: ft	Flange standard: USA Oval	Thermal protection: internal
Viscosity: _____	Pipe connection: 2 - Bolt Flange	
Specific Gravity: 0.985	Product number: 52722341	



**Materials:**

Pump housing: Cast iron
EN-JL1030
ASTM 30 B

Impeller: Composite, PES

Count	Description																																		
1	<p>UP 26-96 F</p>  <p>Product photo could vary from the actual product</p> <p>Product No.: 52722341</p> <p>The pump is of the canned rotor type, i.e. pump and motor form an integral unit without shaft seal and with only two gaskets for sealing. The bearings are lubricated by the pumped liquid. The pump is characterized by:</p> <ul style="list-style-type: none"> * Ceramic shaft and radial bearings. * Carbon axial bearing. * Stainless steel rotor can and bearing plate. * Corrosion-resistant impeller, Composite, PES. * Cast iron pump housing. <p>The motor is a 1-phase motor. No additional motor protection is required.</p> <p>Liquid:</p> <table> <tr> <td>Pumped liquid:</td><td>Water</td></tr> <tr> <td>Liquid temperature range:</td><td>35.6 .. 230 °F</td></tr> <tr> <td>Selected liquid temperature:</td><td>140 °F</td></tr> <tr> <td>Density:</td><td>61.35 lb/ft³</td></tr> </table> <p>Technical:</p> <table> <tr> <td>Actual calculated flow:</td><td>14 US gpm</td></tr> <tr> <td>Resulting head of the pump:</td><td>15.49 ft</td></tr> <tr> <td>Approvals on nameplate:</td><td>UL, CSA</td></tr> </table> <p>Materials:</p> <table> <tr> <td>Pump housing:</td><td>Cast iron EN-JL1030 ASTM 30 B</td></tr> <tr> <td>Impeller:</td><td>Composite, PES</td></tr> </table> <p>Installation:</p> <table> <tr> <td>Maximum ambient temperature:</td><td>104 °F</td></tr> <tr> <td>Ambient max at 176°F liquid:</td><td>176 °F</td></tr> <tr> <td>Maximum operating pressure:</td><td>145.04 psi</td></tr> <tr> <td>Flange standard:</td><td>USA Oval</td></tr> <tr> <td>Type of connection:</td><td>C.I. Flange</td></tr> <tr> <td>Pipe connection:</td><td>2 - Bolt Flange</td></tr> <tr> <td>Pressure stage:</td><td>10</td></tr> <tr> <td>Port-to-port length:</td><td>6 1/2 in</td></tr> </table>	Pumped liquid:	Water	Liquid temperature range:	35.6 .. 230 °F	Selected liquid temperature:	140 °F	Density:	61.35 lb/ft³	Actual calculated flow:	14 US gpm	Resulting head of the pump:	15.49 ft	Approvals on nameplate:	UL, CSA	Pump housing:	Cast iron EN-JL1030 ASTM 30 B	Impeller:	Composite, PES	Maximum ambient temperature:	104 °F	Ambient max at 176°F liquid:	176 °F	Maximum operating pressure:	145.04 psi	Flange standard:	USA Oval	Type of connection:	C.I. Flange	Pipe connection:	2 - Bolt Flange	Pressure stage:	10	Port-to-port length:	6 1/2 in
Pumped liquid:	Water																																		
Liquid temperature range:	35.6 .. 230 °F																																		
Selected liquid temperature:	140 °F																																		
Density:	61.35 lb/ft³																																		
Actual calculated flow:	14 US gpm																																		
Resulting head of the pump:	15.49 ft																																		
Approvals on nameplate:	UL, CSA																																		
Pump housing:	Cast iron EN-JL1030 ASTM 30 B																																		
Impeller:	Composite, PES																																		
Maximum ambient temperature:	104 °F																																		
Ambient max at 176°F liquid:	176 °F																																		
Maximum operating pressure:	145.04 psi																																		
Flange standard:	USA Oval																																		
Type of connection:	C.I. Flange																																		
Pipe connection:	2 - Bolt Flange																																		
Pressure stage:	10																																		
Port-to-port length:	6 1/2 in																																		



Company name: Hurley Engineering
Created by:
Phone:

Date: 3/23/2020

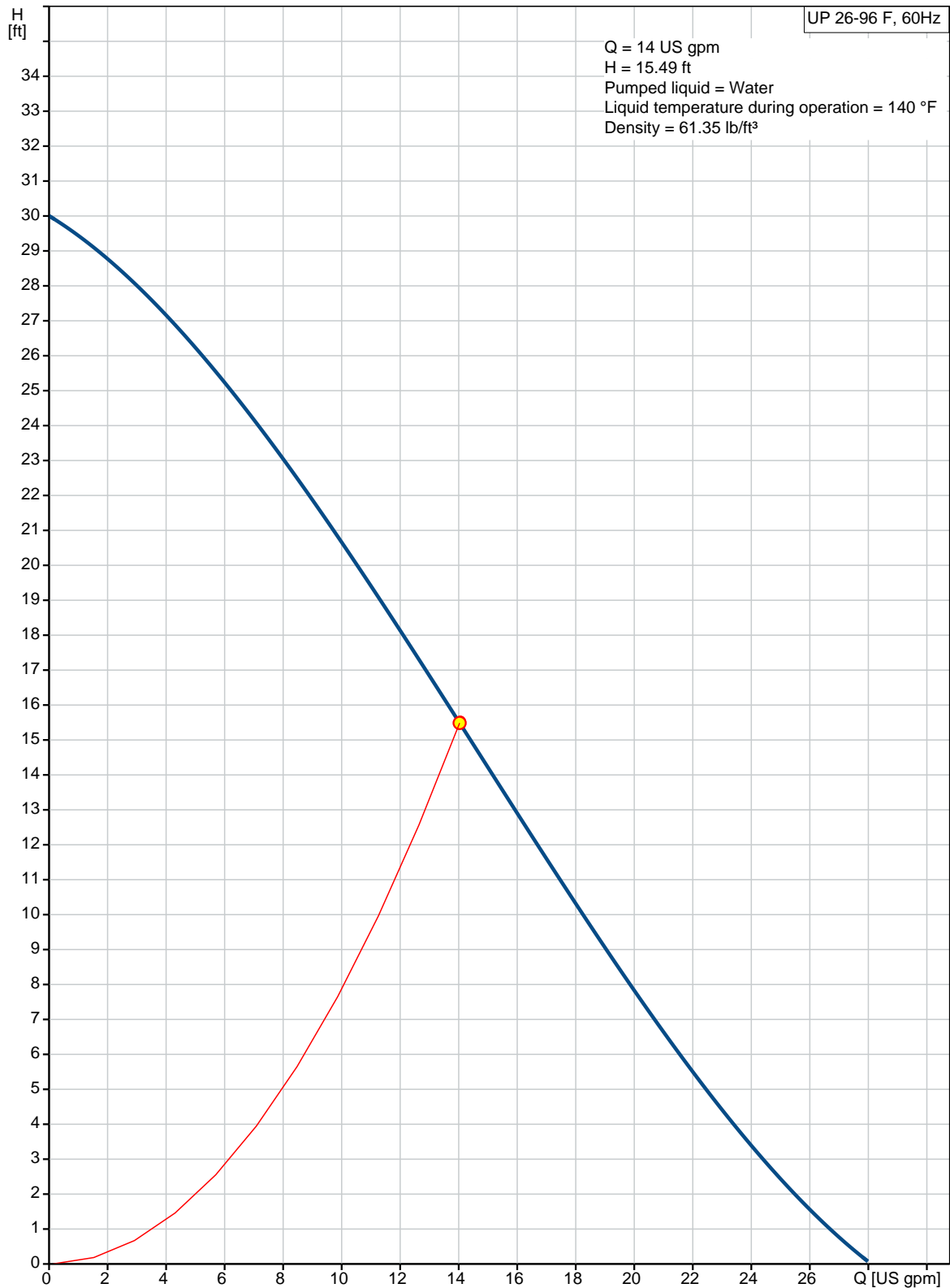
Count	Description
	Electrical data: Max. power input: 205 W Main frequency: 60 Hz Rated voltage: 1 x 115 V Current in speed 3: 1.7 A Capacitor size - run: 10 µF/180 V Number of poles: 2 Insulation class (IEC 85): F Others: Gross weight: 11.2 lb Country of origin: US Custom tariff no.: 8413.70.2005



Company name: Hurley Engineering
Created by:
Phone:

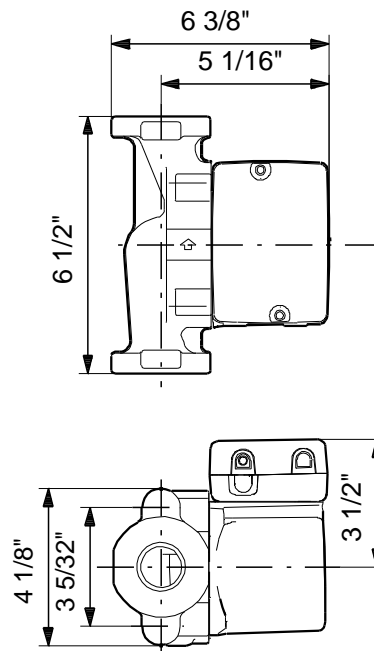
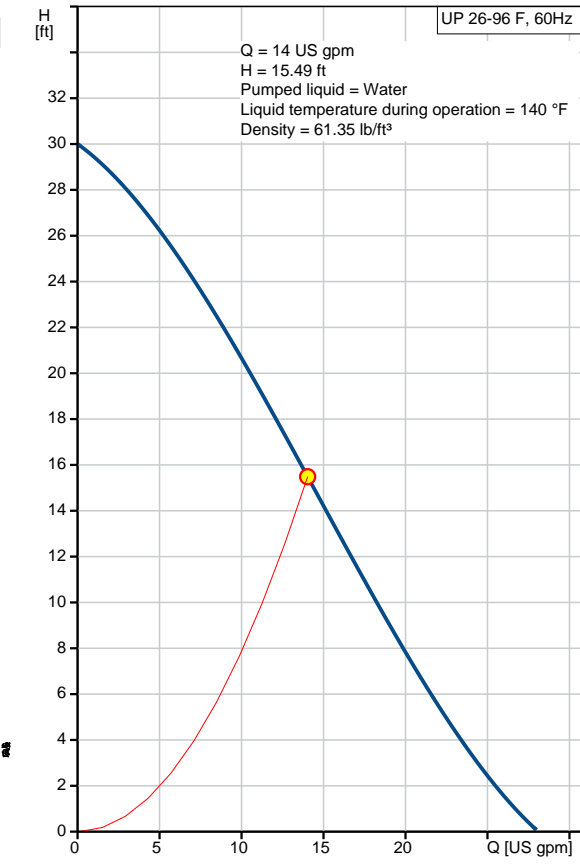
Date: 3/23/2020

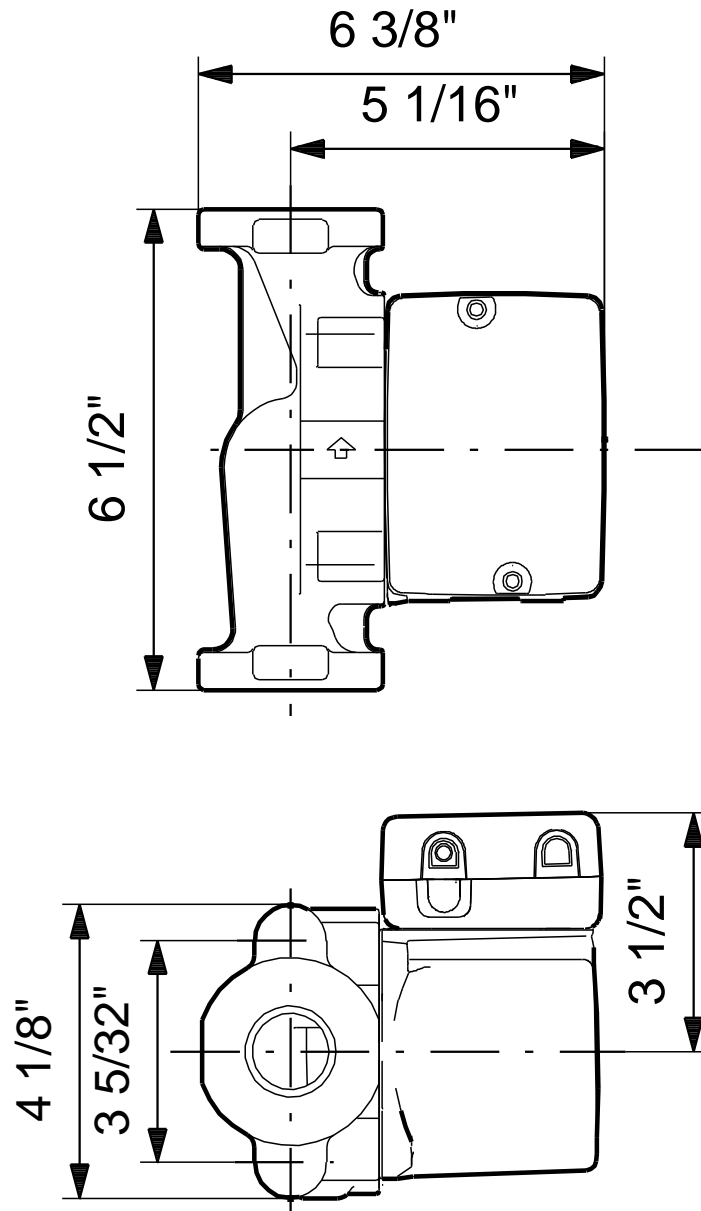
52722341 UP 26-96 F 60 Hz



Date: 3/23/2020

Description	Value
General information:	
Product name:	UP 26-96 F
Product No.:	52722341
EAN:	5700391376214
	5700391376214
Technical:	
Speed Number:	1
Actual calculated flow:	14 US gpm
Max flow:	28.2 US gpm
Resulting head of the pump:	15.49 ft
Head max:	29.86 ft
Approvals on nameplate:	UL, CSA
Materials:	
Pump housing:	Cast iron
	EN-JL1030
	ASTM 30 B
Impeller:	Composite, PES
Installation:	
Maximum ambient temperature:	104 °F
Ambient max at 176°F liquid:	176 °F
Maximum operating pressure:	145.04 psi
Flange standard:	USA Oval
Type of connection:	C.I. Flange
Pipe connection:	2 - Bolt Flange
Pressure stage:	10
Port-to-port length:	6 1/2 in
Liquid:	
Pumped liquid:	Water
Liquid temperature range:	35.6 .. 230 °F
Selected liquid temperature:	140 °F
Density:	61.35 lb/ft³
Electrical data:	
Max. power input:	205 W
Main frequency:	60 Hz
Rated voltage:	1 x 115 V
Current in speed 3:	1.7 A
Capacitor size - run:	10 µF/180 V
Number of poles:	2
Insulation class (IEC 85):	F
Motor protection:	CONTACT
Thermal protec:	internal
Controls:	
Pos term box:	9H
Others:	
Gross weight:	11.2 lb
Country of origin:	US
Custom tariff no.:	8413.70.2005



52722341 UP 26-96 F 60 Hz

Note! All units are in [in] unless otherwise stated.
Disclaimer: This simplified dimensional drawing does not show all details.