

PROJECT:	Criculators	UNIT TAG:	_____	QUANTITY:	1
REPRESENTATIVE:	Hurley Engineering	TYPE OF SERVICE:	Recirculation	DATE:	_____
ENGINEER:	TBD	SUBMITTED BY:	Devin Carle	DATE:	_____
CONTRACTOR:	TBD	APPROVED BY:	_____	DATE:	_____
		ORDER NO.:	_____	DATE:	_____

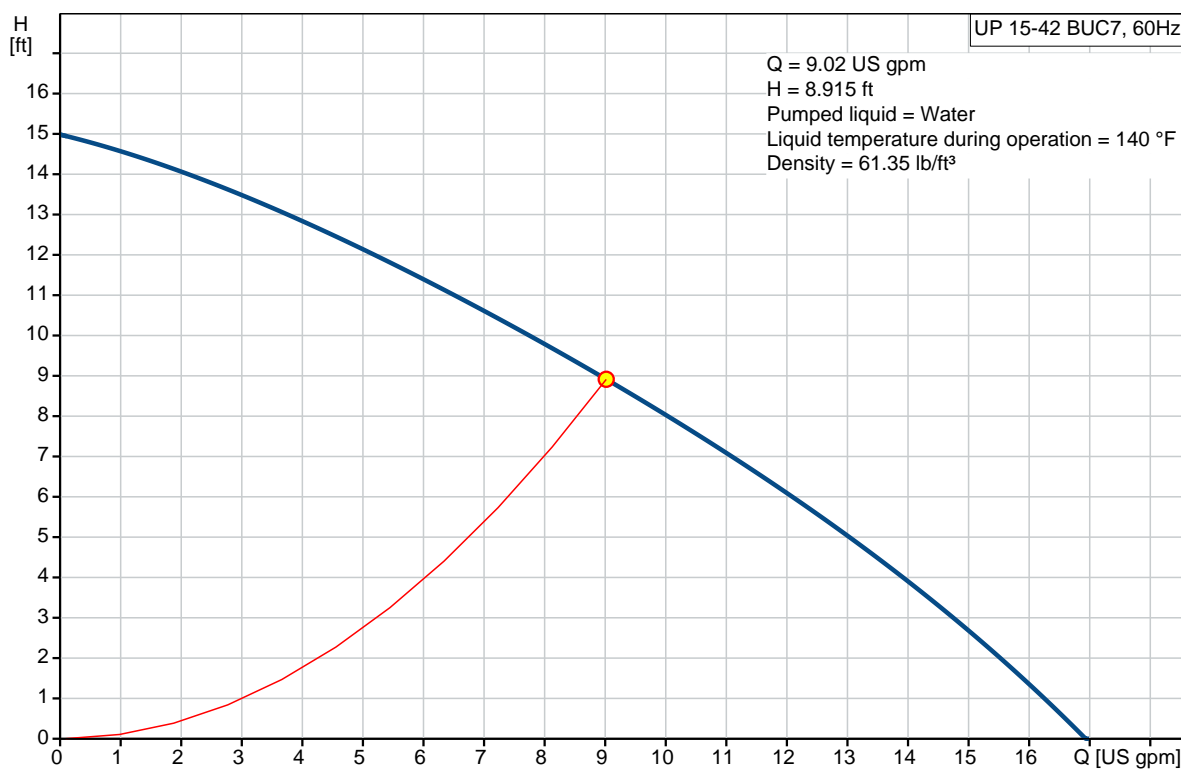


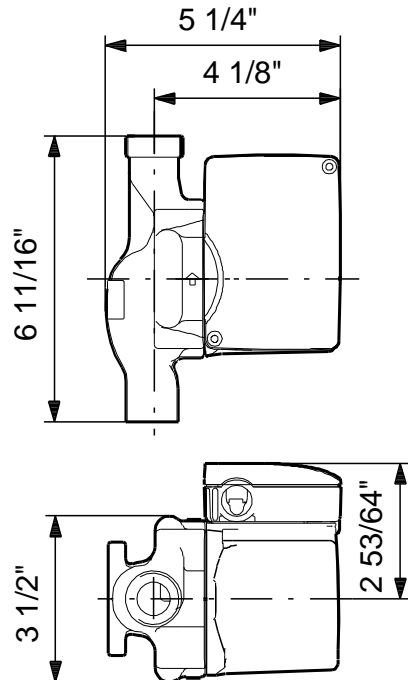
UP 15-42 BUC7

Circulator pumps

Product photo could vary from the actual product


Conditions of Service	Pump Data	Motor Data
Flow: 9.02 US gpm	Maximum operating pressure: 145.04 psi	Max. power input: 85 W
Head: 8.915 ft	Liquid temperature range: 35.6 .. 204.8 °F	Rated voltage: 115 V
Efficiency: _____	Maximum ambient temperature: 104 °F	Main frequency: 60 Hz
Liquid: Water	Approvals: UL, CSA	Insulation class: F
Temperature: 140 °F	Type of connection: Bronze Sweat	Motor protection: CONTACT
NPSH required: ft	Flange standard: USA Sweat	Thermal protection: internal
Viscosity: _____	Pipe connection: 3/4" Sweat	
Specific Gravity: 0.985	Product number: 59896151	



**Materials:**

Pump housing: Bronze
DIN W.-Nr. 2.1176.01

Impeller: Composite, PES

Count	Description																																				
1	<p>UP 15-42 BUC7</p>  <p>Product photo could vary from the actual product</p> <p>Product No.: 59896151</p> <p>The pump is of the canned rotor type, i.e. pump and motor form an integral unit without shaft seal and with only two gaskets for sealing. The bearings are lubricated by the pumped liquid. The pump is characterized by:</p> <ul style="list-style-type: none"> * Ceramic shaft and radial bearings. * Carbon axial bearing. * Stainless steel rotor can and bearing plate. * Corrosion-resistant impeller, Composite, PES. * Bronze pump housing. <p>The motor is a 1-phase motor. No additional motor protection is required.</p> <p>Liquid:</p> <table> <tr> <td>Pumped liquid:</td><td>Water</td></tr> <tr> <td>Liquid temperature range:</td><td>35.6 .. 204.8 °F</td></tr> <tr> <td>Selected liquid temperature:</td><td>140 °F</td></tr> <tr> <td>Density:</td><td>61.35 lb/ft³</td></tr> </table> <p>Technical:</p> <table> <tr> <td>Actual calculated flow:</td><td>9.02 US gpm</td></tr> <tr> <td>Resulting head of the pump:</td><td>8.915 ft</td></tr> <tr> <td>Approvals on nameplate:</td><td>UL, CSA</td></tr> </table> <p>Materials:</p> <table> <tr> <td>Pump housing:</td><td>Bronze</td></tr> <tr> <td></td><td>DIN W.-Nr. 2.1176.01</td></tr> <tr> <td>Impeller:</td><td>Composite, PES</td></tr> </table> <p>Installation:</p> <table> <tr> <td>Maximum ambient temperature:</td><td>104 °F</td></tr> <tr> <td>Ambient max at 176°F liquid:</td><td>176 °F</td></tr> <tr> <td>Maximum operating pressure:</td><td>145.04 psi</td></tr> <tr> <td>Flange standard:</td><td>USA Sweat</td></tr> <tr> <td>Type of connection:</td><td>Bronze Sweat</td></tr> <tr> <td>Pipe connection:</td><td>3/4" Sweat</td></tr> <tr> <td>Pressure stage:</td><td>10</td></tr> <tr> <td>Port-to-port length:</td><td>7 3/4 in</td></tr> </table> <p>Electrical data:</p>	Pumped liquid:	Water	Liquid temperature range:	35.6 .. 204.8 °F	Selected liquid temperature:	140 °F	Density:	61.35 lb/ft³	Actual calculated flow:	9.02 US gpm	Resulting head of the pump:	8.915 ft	Approvals on nameplate:	UL, CSA	Pump housing:	Bronze		DIN W.-Nr. 2.1176.01	Impeller:	Composite, PES	Maximum ambient temperature:	104 °F	Ambient max at 176°F liquid:	176 °F	Maximum operating pressure:	145.04 psi	Flange standard:	USA Sweat	Type of connection:	Bronze Sweat	Pipe connection:	3/4" Sweat	Pressure stage:	10	Port-to-port length:	7 3/4 in
Pumped liquid:	Water																																				
Liquid temperature range:	35.6 .. 204.8 °F																																				
Selected liquid temperature:	140 °F																																				
Density:	61.35 lb/ft³																																				
Actual calculated flow:	9.02 US gpm																																				
Resulting head of the pump:	8.915 ft																																				
Approvals on nameplate:	UL, CSA																																				
Pump housing:	Bronze																																				
	DIN W.-Nr. 2.1176.01																																				
Impeller:	Composite, PES																																				
Maximum ambient temperature:	104 °F																																				
Ambient max at 176°F liquid:	176 °F																																				
Maximum operating pressure:	145.04 psi																																				
Flange standard:	USA Sweat																																				
Type of connection:	Bronze Sweat																																				
Pipe connection:	3/4" Sweat																																				
Pressure stage:	10																																				
Port-to-port length:	7 3/4 in																																				



Company name: Hurley Engineering
Created by:
Phone:

Date: 3/23/2020

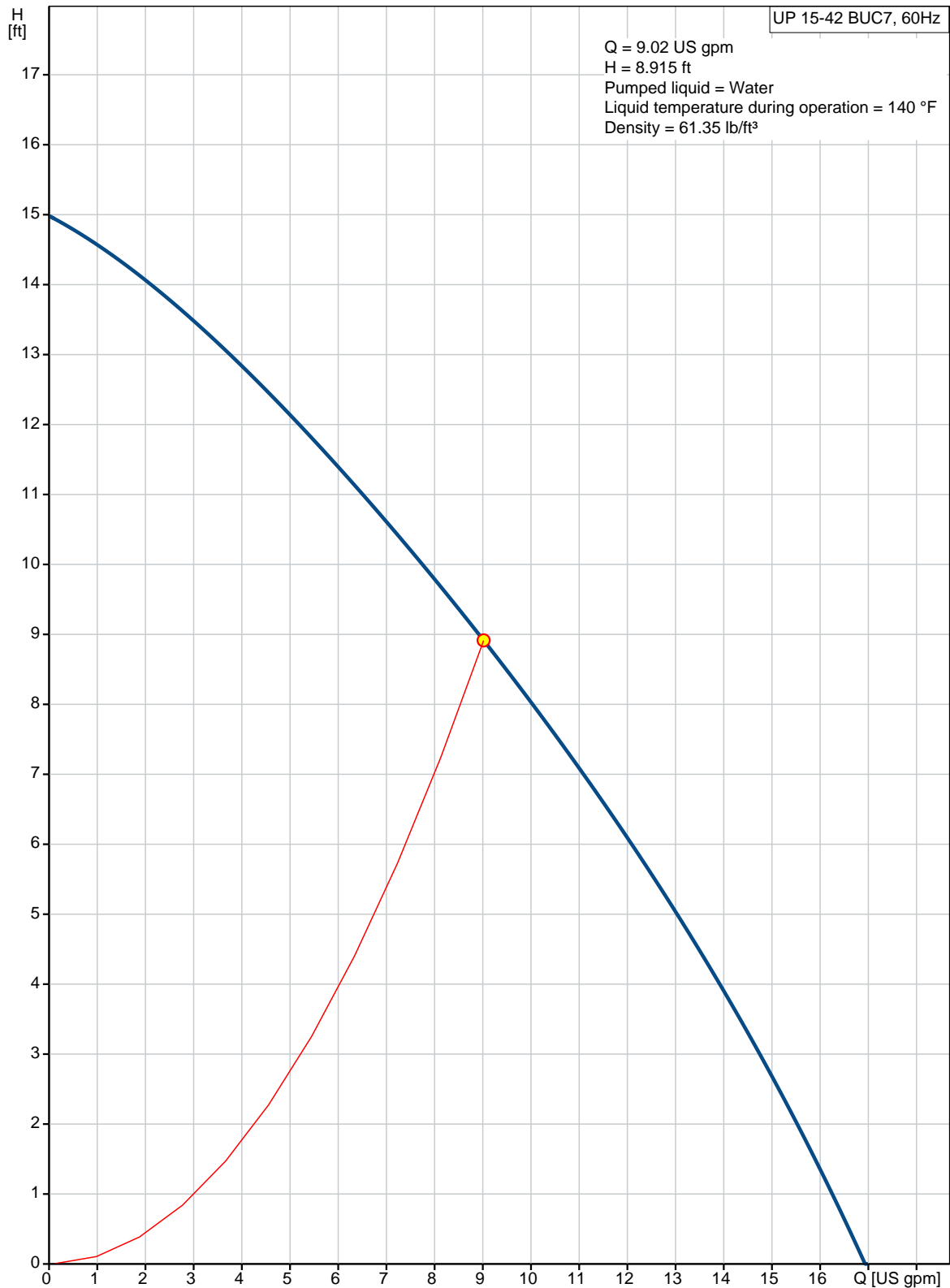
Count	Description
	Max. power input: 85 W Main frequency: 60 Hz Rated voltage: 1 x 115 V Current in speed 3: 0.74 A Capacitor size - run: 10 µF/180 V Number of poles: 2 Insulation class (IEC 85): F Others: Gross weight: 6.75 lb Country of origin: US Custom tariff no.: 8413.70.2005



Company name: Hurley Engineering
Created by:
Phone:

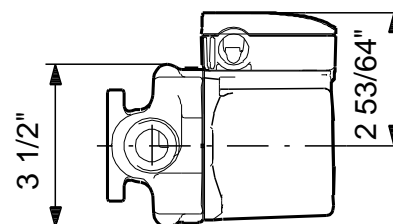
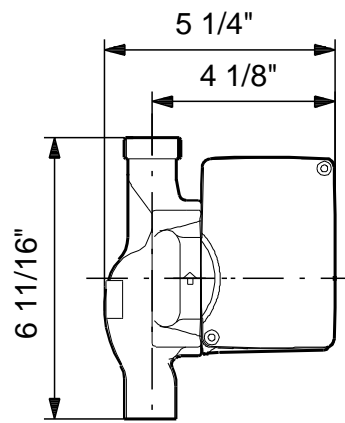
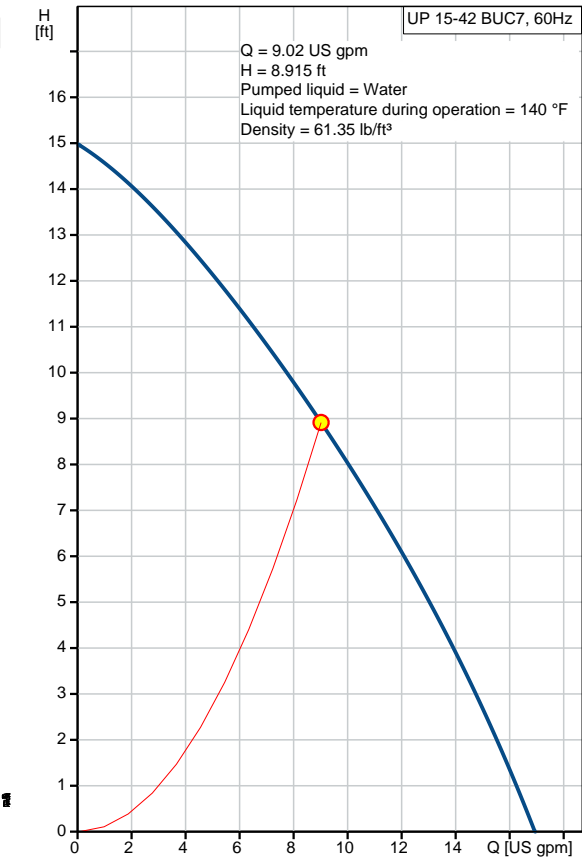
Date: 3/23/2020

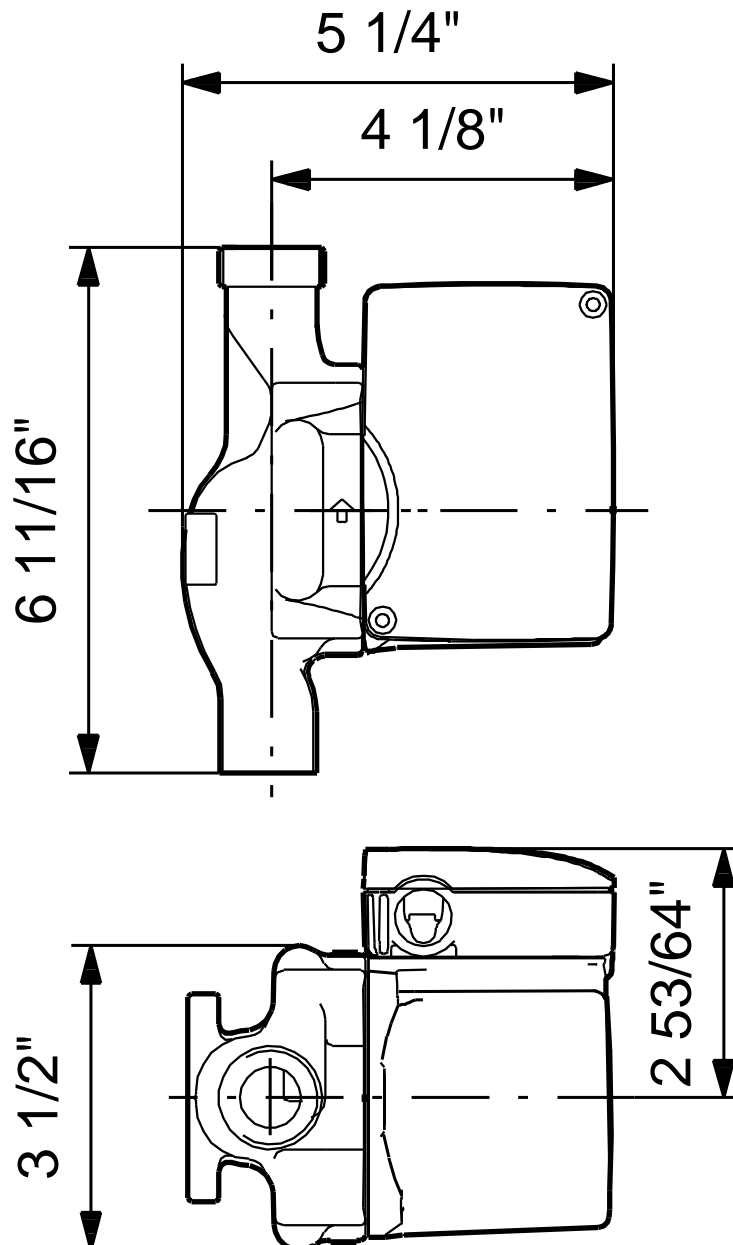
59896151 UP 15-42 BUC7 60 Hz



Date: 3/23/2020

Description	Value
General information:	
Product name:	UP 15-42 BUC7
Product No.:	59896151
EAN:	5700391412714
	5700391412714
Technical:	
Speed Number:	1
Actual calculated flow:	9.02 US gpm
Max flow:	17.2 US gpm
Resulting head of the pump:	8.915 ft
Head max:	15.09 ft
Approvals on nameplate:	UL, CSA
Valve:	pump with built-in isolating and non-return valves
Materials:	
Pump housing:	Bronze
	DIN W.-Nr. 2.1176.01
Impeller:	Composite, PES
Installation:	
Maximum ambient temperature:	104 °F
Ambient max at 176°F liquid:	176 °F
Maximum operating pressure:	145.04 psi
Flange standard:	USA Sweat
Type of connection:	Bronze Sweat
Pipe connection:	3/4" Sweat
Pressure stage:	10
Port-to-port length:	7 3/4 in
Liquid:	
Pumped liquid:	Water
Liquid temperature range:	35.6 .. 204.8 °F
Selected liquid temperature:	140 °F
Density:	61.35 lb/ft³
Electrical data:	
Max. power input:	85 W
Main frequency:	60 Hz
Rated voltage:	1 x 115 V
Current in speed 3:	0.74 A
Capacitor size - run:	10 µF/180 V
Number of poles:	2
Insulation class (IEC 85):	F
Motor protection:	CONTACT
Thermal protec:	internal
Controls:	
Pos term box:	9H
Others:	
Gross weight:	6.75 lb
Country of origin:	US
Custom tariff no.:	8413.70.2005



59896151 UP 15-42 BUC7 60 Hz

Note! All units are in [in] unless otherwise stated.
Disclaimer: This simplified dimensional drawing does not show all details.