

PROJECT:	Criculators	UNIT TAG:	_____	QUANTITY:	1
REPRESENTATIVE:	Hurley Engineering	TYPE OF SERVICE:	Recirculation	DATE:	_____
ENGINEER:	TBD	SUBMITTED BY:	Devin Carle	DATE:	_____
CONTRACTOR:	TBD	APPROVED BY:	_____	DATE:	_____
		ORDER NO.:	_____	DATE:	_____

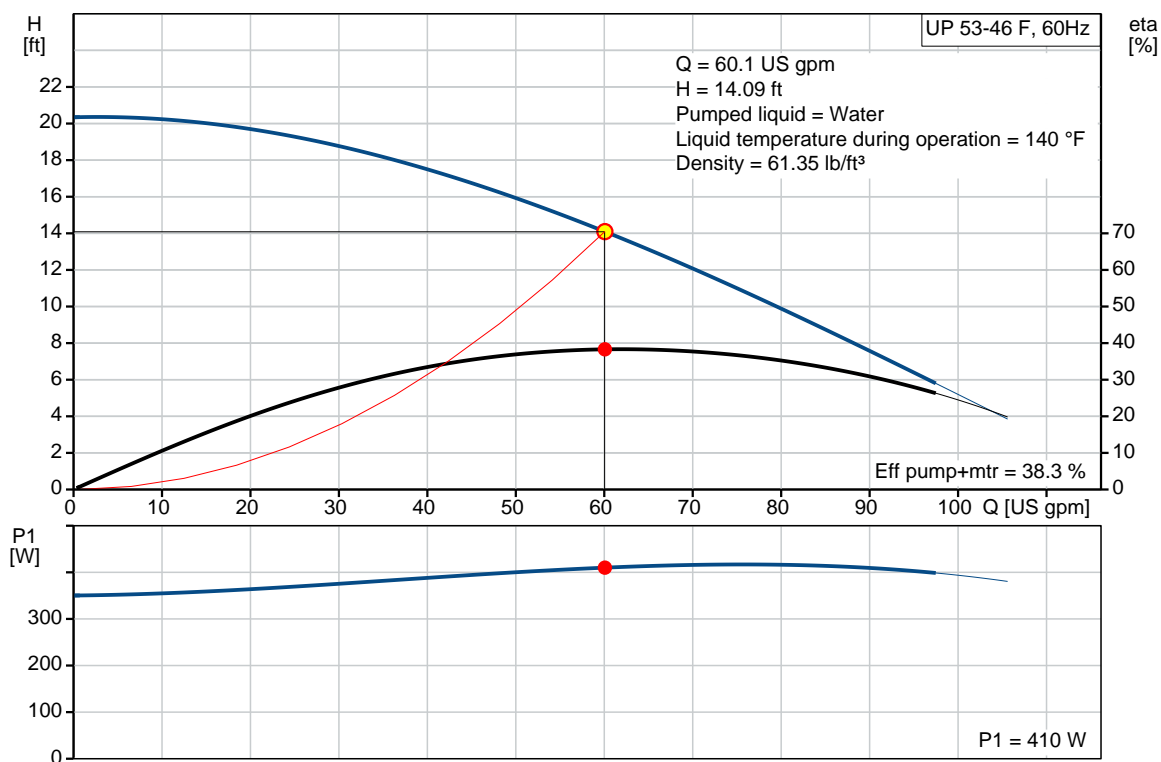


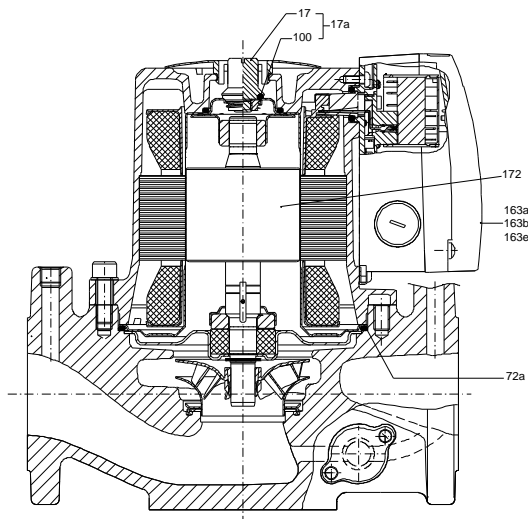
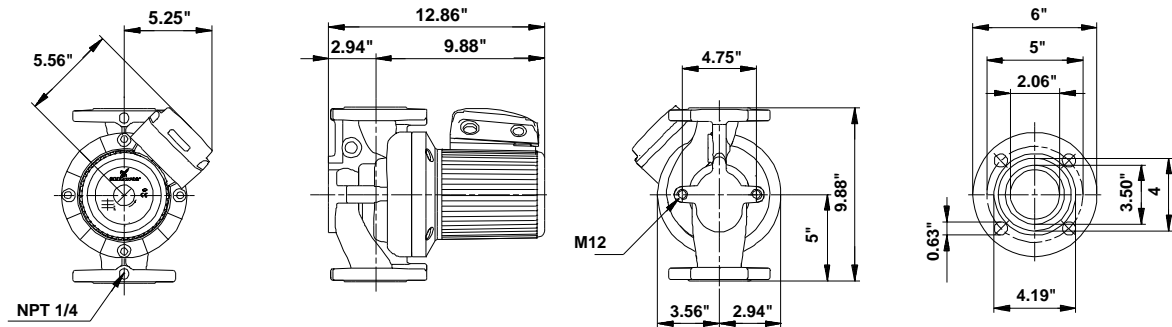
UP 53-46 F

Circulator pumps

Product photo could vary from the actual product

Conditions of Service	Pump Data	Motor Data
Flow: 60.1 US gpm	Maximum operating pressure: 145.04 psi	Max. power input: 420 W
Head: 14.09 ft	Liquid temperature range: 14 .. 230 °F	Rated voltage: 115/230 V
Efficiency: 38.3 %	Maximum ambient temperature: 104 °F	Main frequency: 60 Hz
Liquid: Water	Approvals: CUL	Enclosure class: X4D
Temperature: 140 °F	Type of connection: F	Insulation class: F
NPSH required: ft	Flange standard: USA	Motor protection: CONTACT
Viscosity: _____	Pipe connection: GF 53	Thermal protection: internal
Specific Gravity: 0.985	Product number: 96633591	






Materials:

Pump housing: Cast iron
EN-JL1040
ASTM 35 B - 40 B

Impeller: Stainless steel
DIN W.-Nr. 1.4301
AISI 304

Count	Description
1	<p>UP 53-46 F</p>  <p>Product photo could vary from the actual product</p> <p>Product No.: 96633591</p> <p>The pump is of the canned rotor type, i.e. pump and motor form an integral unit without shaft seal and with only two gaskets for sealing. The bearings are lubricated by the pumped liquid.</p> <p>In order to avoid problems in connection with disposal, great importance has been attached to using as few different materials as possible.</p> <p>The pump is characterized by:</p> <ul style="list-style-type: none"> * 1 speed motor. * Ceramic radial bearings. * Carbon axial bearing. * Stainless steel rotor can, bearing plate and rotor cladding. * Aluminium alloy stator housing. * Cast iron pump housing. * Stator with built-in thermal switch. <p>The motor is a 1-phase motor.</p> <p>The pump is supplied with a standard module in the terminal box. The standard module is to be connected to the mains supply via external contactor.</p> <p>Controls:</p> <p>Relay: with relay</p> <p>Liquid:</p> <p>Pumped liquid: Water</p> <p>Liquid temperature range: 14 .. 230 °F</p> <p>Selected liquid temperature: 140 °F</p> <p>Density: 61.35 lb/ft³</p> <p>Technical:</p> <p>Actual calculated flow: 60.1 US gpm</p> <p>Resulting head of the pump: 14.09 ft</p> <p>Approvals on nameplate: CUL</p> <p>Materials:</p>



Company name: Hurley Engineering

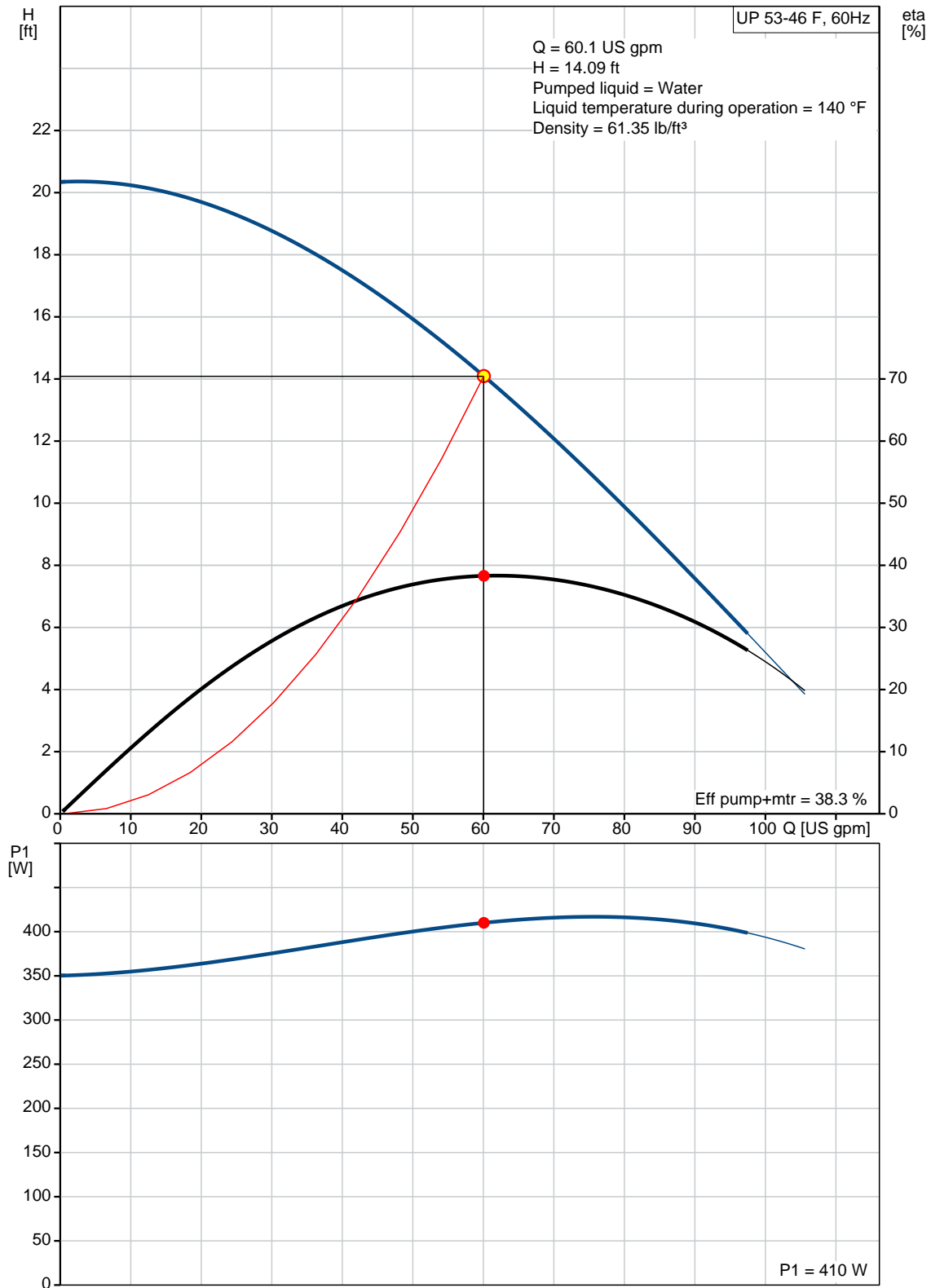
Created by:

Phone:

Date: 3/23/2020

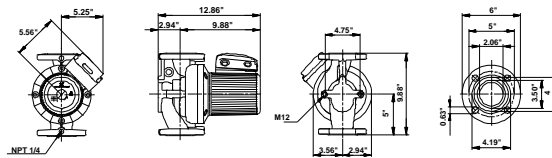
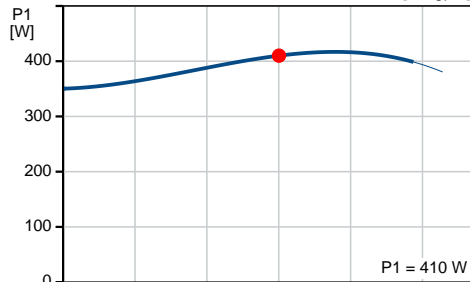
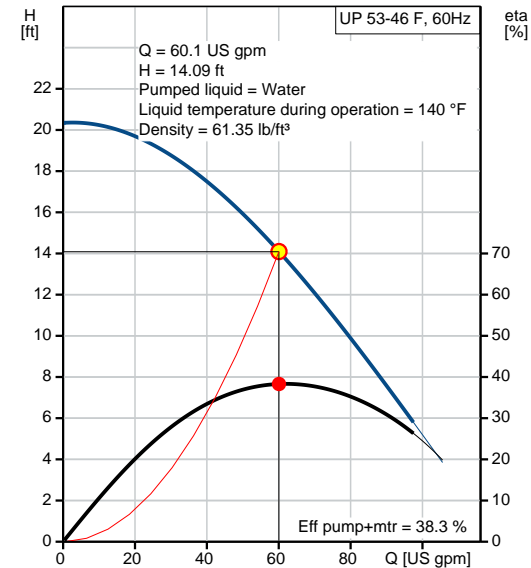
Count	Description
	<p>Pump housing: Cast iron EN-JL1040 ASTM 35 B - 40 B</p> <p>Impeller: Stainless steel DIN W.-Nr. 1.4301 AISI 304</p> <p>Installation: Range of ambient temperature: 32 .. 104 °F Maximum operating pressure: 145.04 psi Flange standard: USA Type of connection: F Pipe connection: GF 53 Pressure stage: 145 psi Port-to-port length: 9 7/8 in</p> <p>Electrical data: Max. power input: 420 W Main frequency: 60 Hz Rated voltage: 1 x 115/230 V Current in speed 3: 3.9/2.1 A Cos phi: 0.90 Capacitor size - run: 50 µF/240 V Enclosure class (IEC 34-5): X4D Insulation class (IEC 85): F</p> <p>Others: Net weight: 44.5 lb Gross weight: 52.5 lb Shipping volume: 2.12 ft³ Country of origin: RS Custom tariff no.: 8413.70.2005</p>

96633591 UP 53-46 F 60 Hz



Date: 3/23/2020

Description	Value
General information:	
Product name:	UP 53-46 F
Product No.:	96633591
EAN:	5700835482518
	5700835482518
Technical:	
Speed Number:	1
Actual calculated flow:	60.1 US gpm
Resulting head of the pump:	14.09 ft
Head max:	15.09 ft
Approvals on nameplate:	CUL
Model:	C
Materials:	
Pump housing:	Cast iron
	EN-JL1040
	ASTM 35 B - 40 B
Impeller:	Stainless steel
	DIN W.-Nr. 1.4301
	AISI 304
Installation:	
Range of ambient temperature:	32 .. 104 °F
Maximum operating pressure:	145.04 psi
Flange standard:	USA
Type of connection:	F
Pipe connection:	GF 53
Pressure stage:	145 psi
Port-to-port length:	9 7/8 in
Liquid:	
Pumped liquid:	Water
Liquid temperature range:	14 .. 230 °F
Selected liquid temperature:	140 °F
Density:	61.35 lb/ft³
Electrical data:	
Max. power input:	420 W
Main frequency:	60 Hz
Rated voltage:	1 x 115/230 V
Current in speed 3:	3.9/2.1 A
Cos phi:	0.90
Capacitor size - run:	50 µF/240 V
Enclosure class (IEC 34-5):	X4D
Insulation class (IEC 85):	F
Motor protection:	CONTACT
Thermal protec:	internal
Controls:	
Relay:	with relay
Pos term box:	1.30H
Others:	
Net weight:	44.5 lb
Gross weight:	52.5 lb
Shipping volume:	2.12 ft³
Sales region:	Namreg
Country of origin:	RS
Custom tariff no.:	8413.70.2005

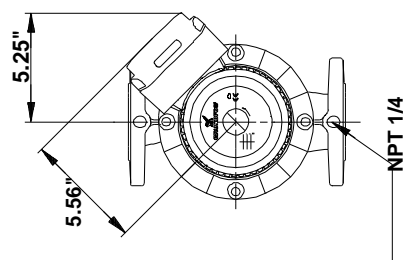
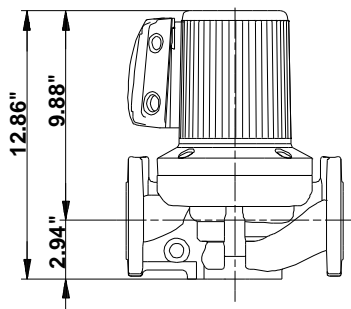
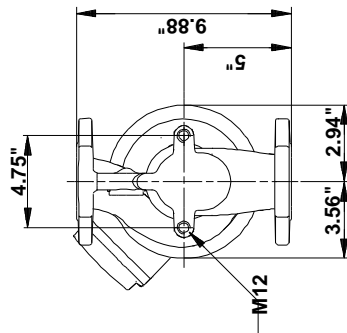
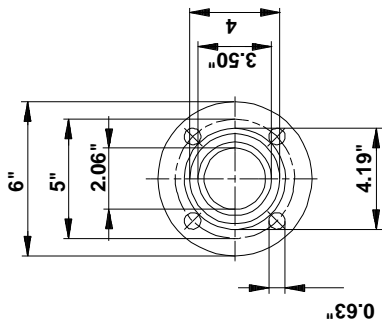




Company name: Hurley Engineering
Created by:
Phone:

Date: 3/23/2020

96633591 UP 53-46 F 60 Hz



Note! All units are in [in] unless otherwise stated.
Disclaimer: This simplified dimensional drawing does not show all details.