

PROJECT:	Circulators	UNIT TAG:		QUANTITY:	1
REPRESENTATIVE:	Hurley Engineering	TYPE OF SERVICE:	Recirculation	DATE:	
ENGINEER:	TBD	SUBMITTED BY:	Devin Carle	DATE:	
CONTRACTOR:	TBD	APPROVED BY:		DATE:	
		ORDER NO.:		DATE:	

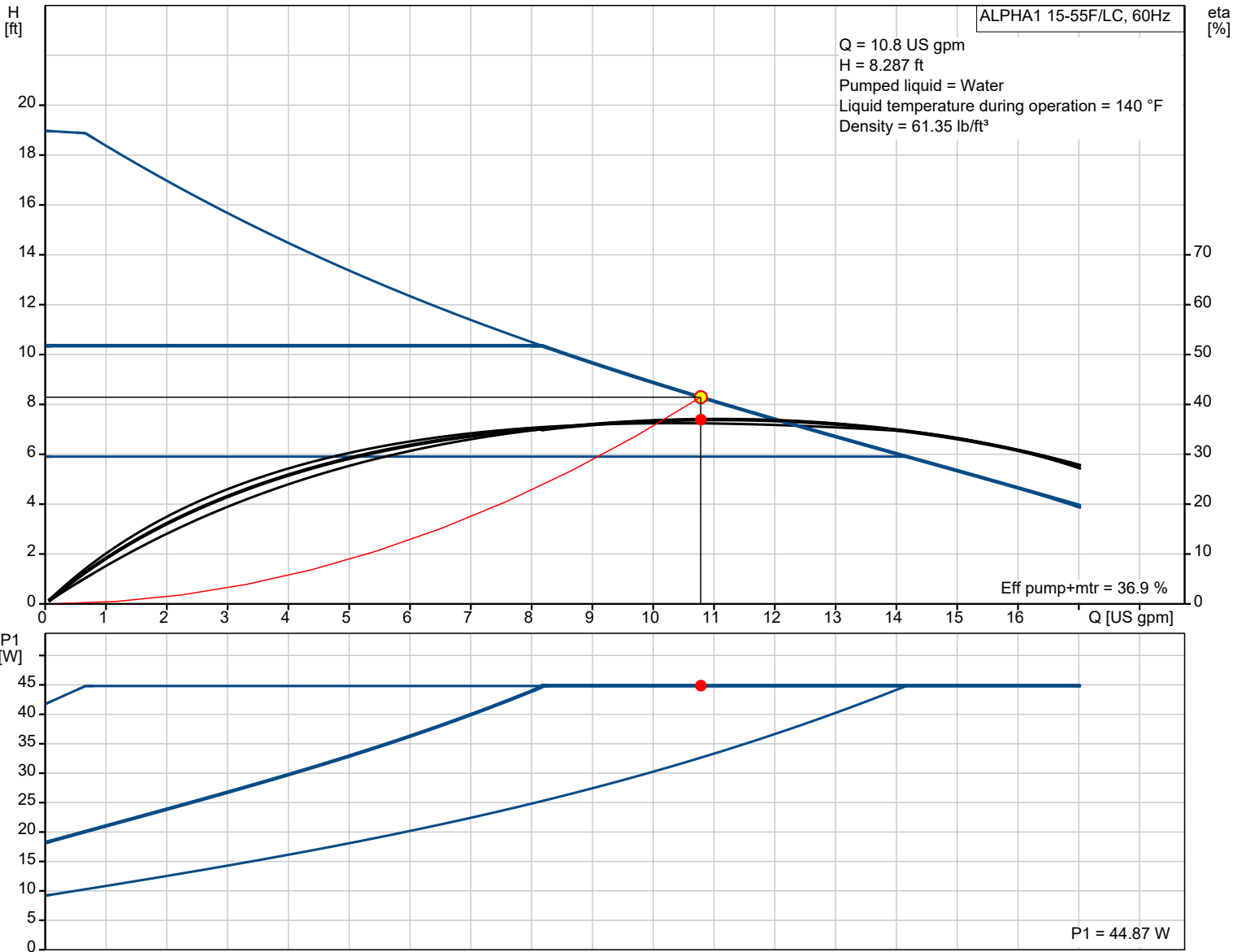


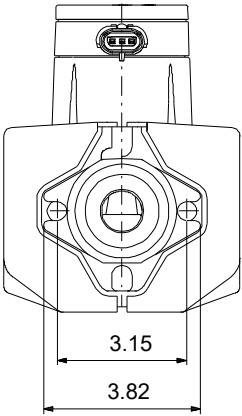
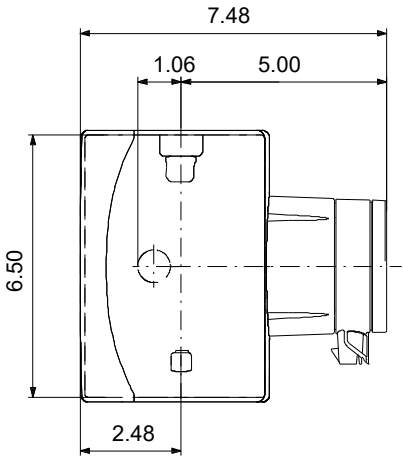
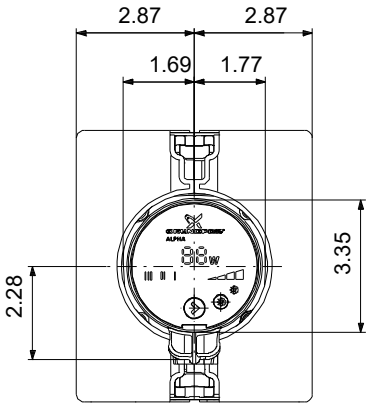
ALPHA1 15-55F/LC

Featuring three constant-pressure control modes, The Grundfos ALPHA1 is a high-efficiency ECM variable speed circulator designed for a wide variety of heating.


Product photo could vary from the actual product

Conditions of Service	Pump Data	Motor Data
Flow: 10.8 US gpm	Maximum operating pressure: 145.04 psi	P1 max: 5 .. 45 W
Head: 8.287 ft	Liquid temperature range: 35.6 .. 230 °F	Rated voltage: 115 V
Efficiency: 36.9 %	Maximum ambient temperature: 104 °F	Main frequency: 60 Hz
Liquid: Water	Approvals: ETL, FCC	Enclosure class: IP42
Temperature: 140 °F	Pipe connection: 1 1/2	Insulation class: F
NPSH required: ft	Product number: On request	Motor protection: NONE
Specific Gravity: 0.985		Thermal protection: ELEC



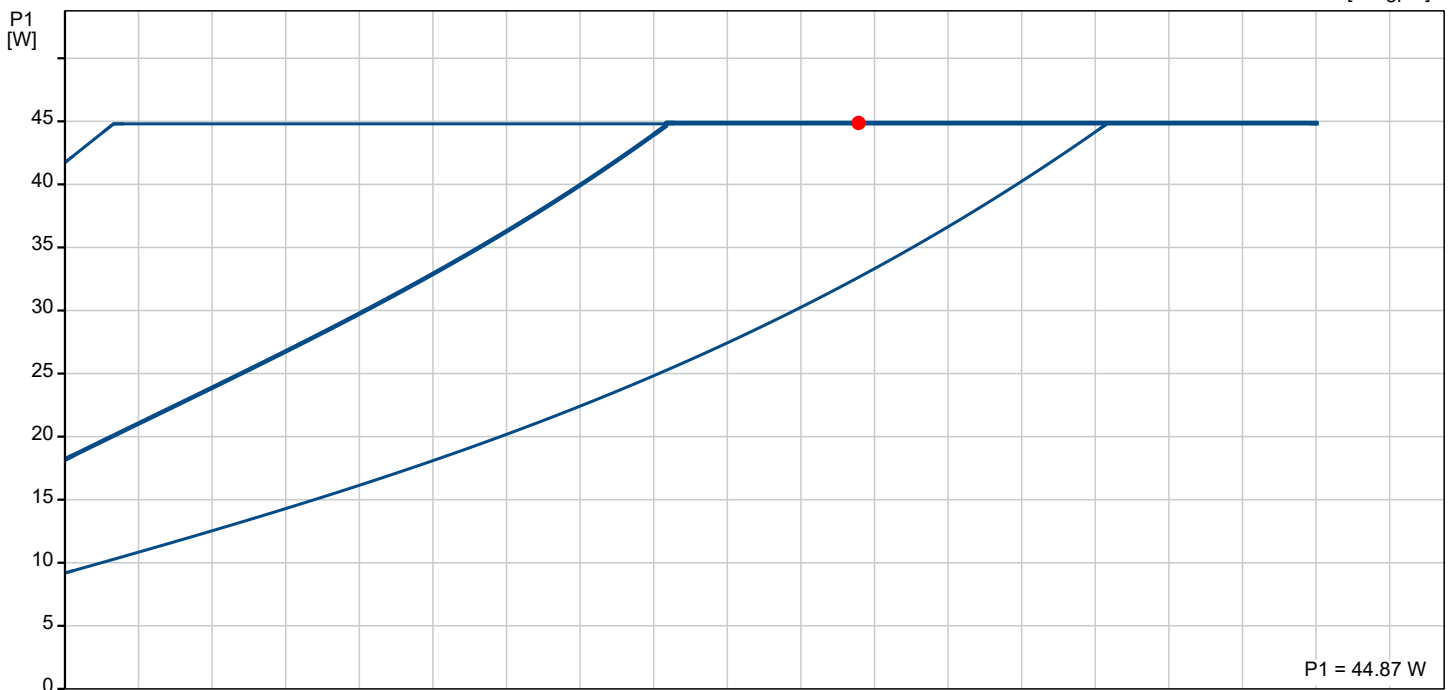
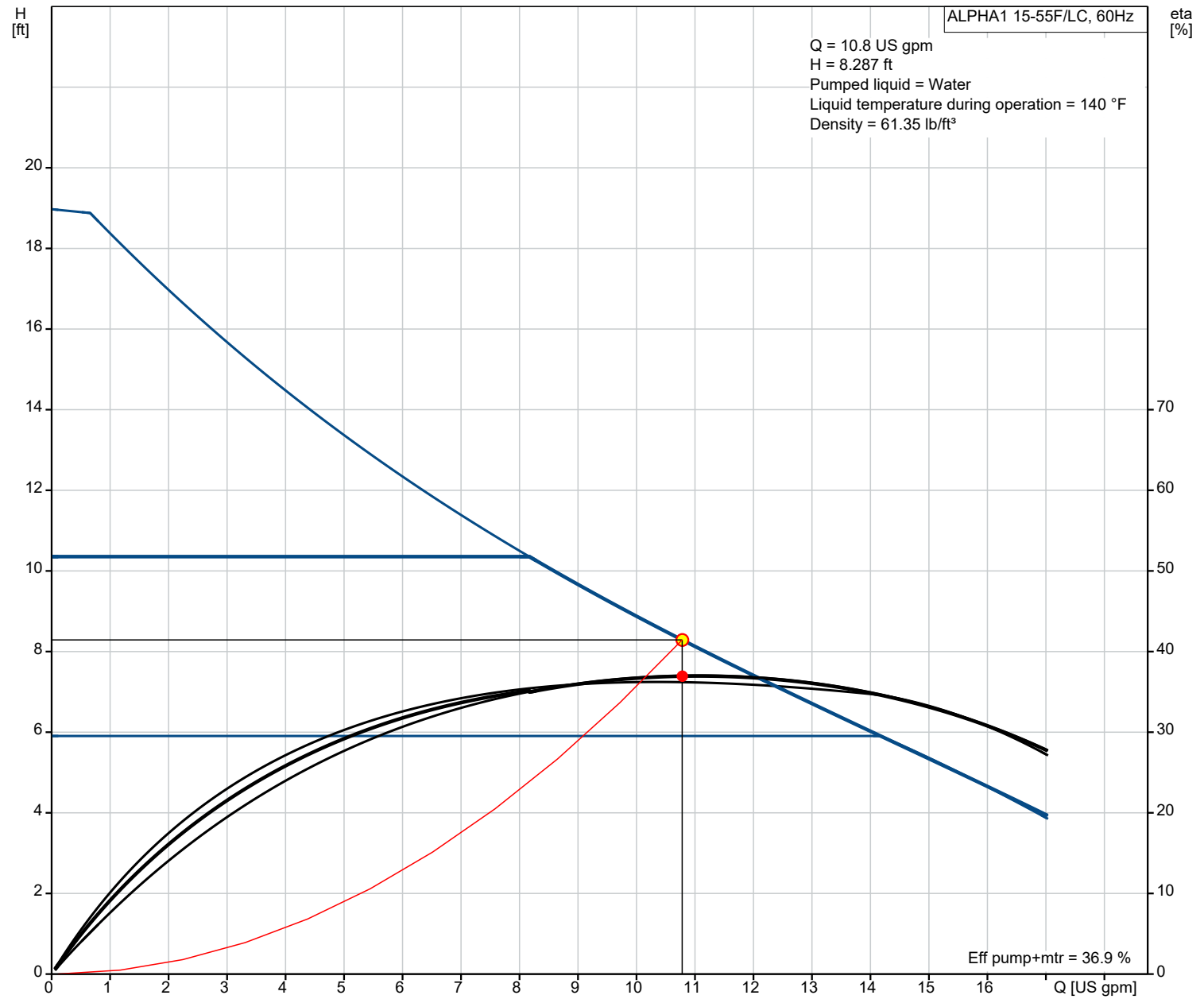


Materials:
Pump housing: Cast iron
Pump housing: EN 1561 EN-GJL-150
Impeller: Composite

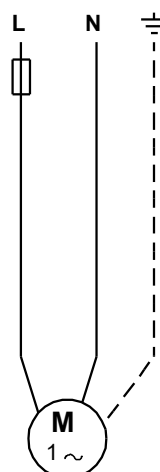
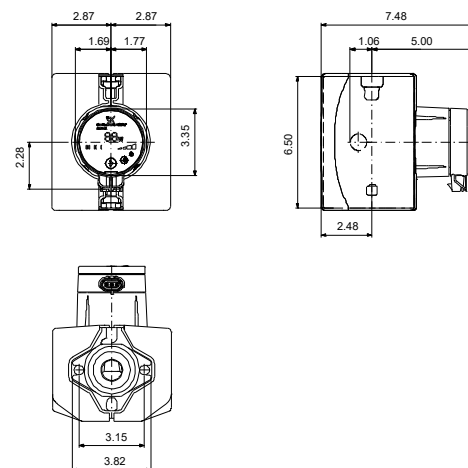
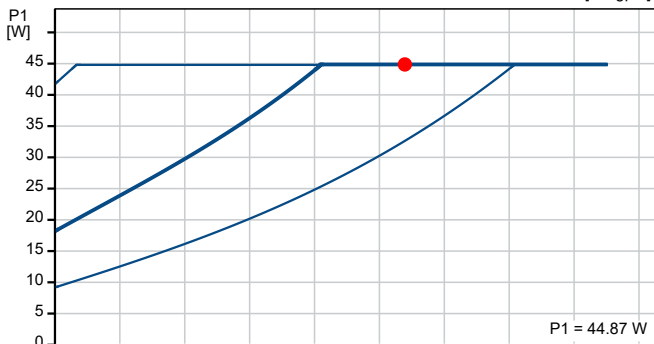
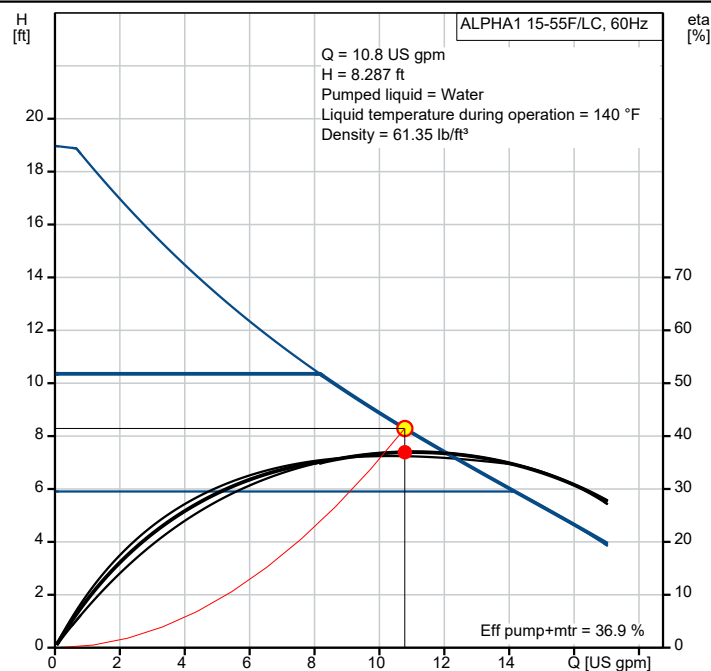
Count	Description
1	<p>ALPHA1 15-55F/LC</p>  <p>Product photo could vary from the actual product</p> <p>Product No.: On request</p> <p>The Grundfos ALPHA1 is a high-efficiency, variable speed circulator fitted with electronically commutated motor. Designed for circulating liquids in heating systems.</p> <p>It features a constant pressure control mode with three settings. The intuitive one-button operation and LED display makes the selection of the settings easy. The large LED display shows the current energy consumption in Watts and estimated flow in gallons per minute.</p> <p>ALPHA1 materials and design are resistant to blockage from magnetite found in hydronic systems.</p> <p>The robust startup enables ALPHA1 to continuously attempt to restart – indefinitely – in blocked rotor conditions.</p> <p>ALPHA1 is complete with an integrated check-valve, and nut captures for flanges.</p> <p>For power connection two options are available with either line cord or terminal box for conduit connections.</p> <p>Liquid: Pumped liquid: Water Liquid temperature range: 35.6 .. 230 °F Selected liquid temperature: 140 °F Density: 61.35 lb/ft³</p> <p>Technical: Actual calculated flow: 10.8 US gpm Resulting head of the pump: 8.287 ft TF class: 110 Approvals on nameplate: ETL, FCC</p> <p>Materials: Pump housing: Cast iron EN 1561 EN-GJL-150 Impeller: Composite</p> <p>Installation: Range of ambient temperature: 32 .. 104 °F Maximum operating pressure: 145.04 psi Type of connection: GF Pipe connection: 1 1/2 Pressure stage: PN 10 Port-to-port length: 6 1/2 in</p> <p>Electrical data: Power input - P1: 5 .. 45 W Main frequency: 60 Hz Rated voltage: 1 x 115 V Maximum current consumption: 0.1 .. 0.65 A Enclosure class (IEC 34-5): IP42 Insulation class (IEC 85): F</p> <p>Others: Net weight: 6.5 lb Gross weight: 7.26 lb Shipping volume: 0.28 ft³</p>

Count	Description
	Country of origin: US Custom tariff no.: 8413.70.2005

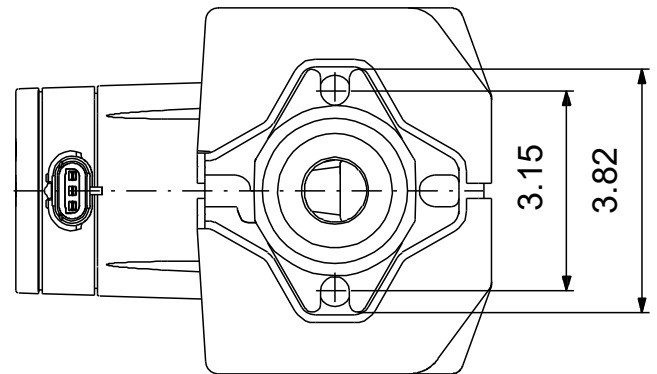
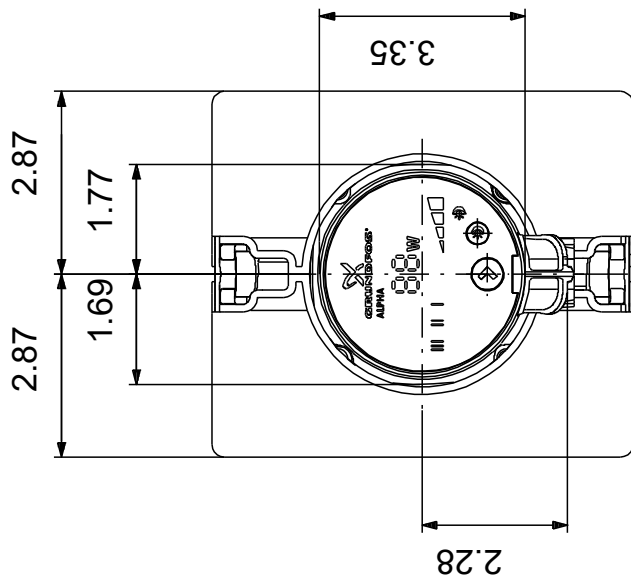
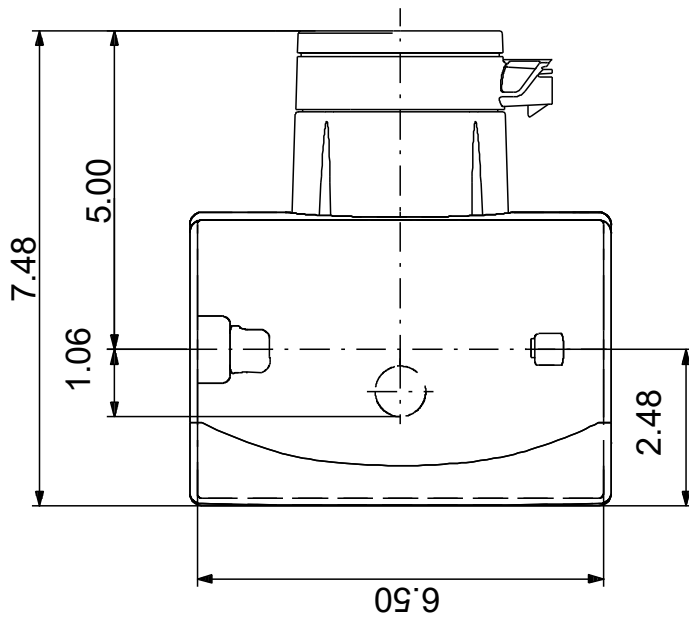
On request ALPHA1 15-55F/LC 60 Hz



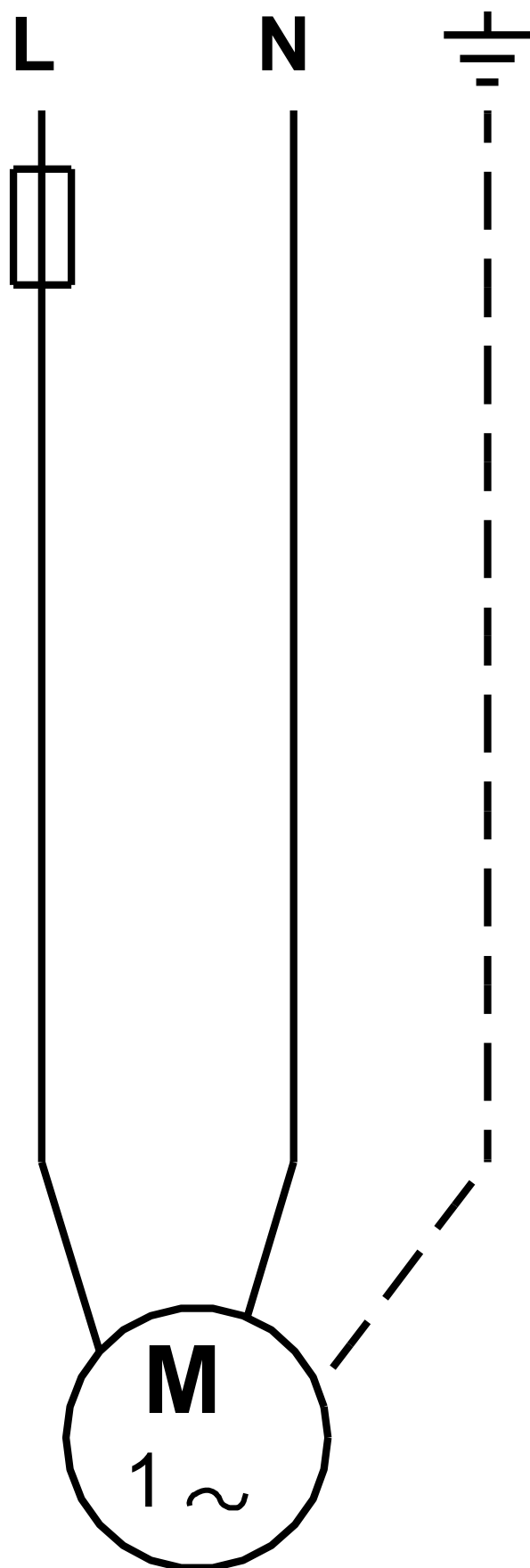
Description	Value
General information:	
Product name:	ALPHA1 15-55F/LC
Product No.:	On request
EAN:	On request
Technical:	
Actual calculated flow:	10.8 US gpm
Resulting head of the pump:	8.287 ft
Head max:	18.05 ft
TF class:	110
Approvals on nameplate:	ETL, FCC
Materials:	
Pump housing:	Cast iron
Pump housing:	EN 1561 EN-GJL-150
Impeller:	Composite
Installation:	
Range of ambient temperature:	32 .. 104 °F
Maximum operating pressure:	145.04 psi
Type of connection:	GF
Pipe connection:	1 1/2
Pressure stage:	PN 10
Port-to-port length:	6 1/2 in
Liquid:	
Pumped liquid:	Water
Liquid temperature range:	35.6 .. 230 °F
Selected liquid temperature:	140 °F
Density:	61.35 lb/ft³
Electrical data:	
Power input - P1:	5 .. 45 W
Main frequency:	60 Hz
Rated voltage:	1 x 115 V
Maximum current consumption:	0.1 .. 0.65 A
Enclosure class (IEC 34-5):	IP42
Insulation class (IEC 85):	F
Motor protection:	NONE
Thermal protec:	ELEC
Controls:	
Pos term box:	6H
Others:	
Net weight:	6.5 lb
Gross weight:	7.26 lb
Shipping volume:	0.28 ft³
Sales region:	USA
Country of origin:	US
Custom tariff no.:	8413.70.2005



On request ALPHA1 15-55F/LC 60 Hz



On request ALPHA1 15-55F/LC 60 Hz





Company name: Hurley Engineering

Created by:

Phone:

Date:

4/22/2021

Order Data:

Product name: ALPHA1 15-55F/LC

Amount: 1

Product No.: On request

Total: Price on request
