

HYDROMATIC® HBB-SKV40 4/10 HP BASIN BOSS™

PACKAGED SEWAGE SYSTEM

24" x 24" Basin

30% more capacity than standard 18" x 30" basins.

Fully Assembled

Pump is pre-installed in basin, with integral torque stops to ensure stability.

Anti-Flotation Features

Include concrete splash lip and unique basin shape to keep the system from floating or becoming "un-installed".

Integral 360° Top Grip

For easy lifting and handling in tight spaces.

Stackable Design

Allows for compact inventory.

Concrete-Proof Cover Insert

Protects the system from damage during rough-in and masonry work.

Easy-Out™ Rod

Allows removal of float switch without disassembling basin lid, or handling pump or plumbing. Additional clip for secondary float included; float sold separately.

Available with Q-Alert™ High-Water Alarm

Small, residential high-water alarm is ideal for furnishing an inexpensive way to protect home and valuables. Indoor/outdoor applications, sold separately.



Catalog Number	HP	Package Type	Cord Length	Switch Type	Basin Size	Includes Alarm
HBB-SKV40	4/10	Preassembled	10'	Wide-angle float switch	24" x 24"	No
HBB-SKV40-QAlert	4/10	Preassembled	10'	Wide-angle float switch	24" x 24"	Yes

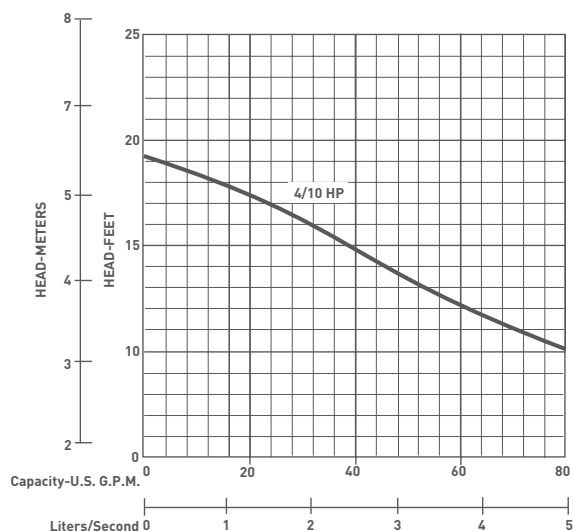
HYDROMATIC® HBB-SKV40

4/10 HP BASIN BOSS™ PACKAGED SEWAGE SYSTEM

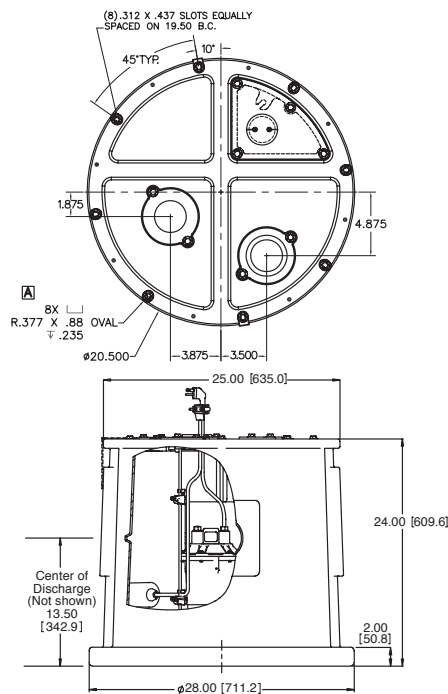
Pump Characteristics

Pump/Motor Unit	Submersible	
Automatic Models	SKV40A1	SKV40A2
Horsepower	4/10	
Full Load Amps	12.6	6.4
Motor Type	Split Phase	
RPM	1550	
Phase Ø	1	
Voltage	115	230
Hertz	60	
Operation	Intermittent	
Temperature	120°F Ambient	
NEMA Design	A	
Insulation	Class B	
Discharge Size	2" NPT std.	
Solids Handling	2"	
Unit Weight	35 lbs.	
Power Cord	18/3, SJTW, 115V = 10' std. (20' opt.)	

Performance Data



Dimensional Data



Pump may differ from what is shown in drawing. All dimensions (in inches) are for estimating purposes only. Metric for international use. Component dimensions may vary $\pm 1/8$ inch. Dimensions and weights are approximate. On/off level adjustable.

Specifications

Pump

- Housing – Class 30 cast iron
- Impeller – Thermoplastic recessed
- Maximum Limits – Intermittent liquid temperature: 120°F (60°C)
- Electrical – 115V, 1Ø, 12.6 FLA, 60 Hz
230V, 1Ø, 6.4 FLA, 60 Hz
- Motor – 4/10 HP split phase w/thermal overload protection, 1550 RPM

Basin

- Construction – Structural foam; 24" x 24"; 45-gallon capacity



USA
740 EAST 9TH STREET, ASHLAND, OHIO 44805 WWW.HYDROMATIC.COM
PH: 888-957-8677 ORDERS FAX: 888-840-7867

CANADA
269 TRILLIUM DRIVE, KITCHENER, ONTARIO, CANADA N2G 4W5
PH: 519-896-2163 ORDERS FAX: 519-896-6337

Because we are continuously improving our products and services, Pentair reserves the right to change specifications without prior notice.