

PROJECT:	Magna-3	UNIT TAG:		QUANTITY:	1
REPRESENTATIVE:	Hurley Engineering	TYPE OF SERVICE:	Stainless Steel Pump Configuration	DATE:	
ENGINEER:	TBD	SUBMITTED BY:	Devin Carle	DATE:	
CONTRACTOR:	TBD	APPROVED BY:		DATE:	
		ORDER NO.:		DATE:	

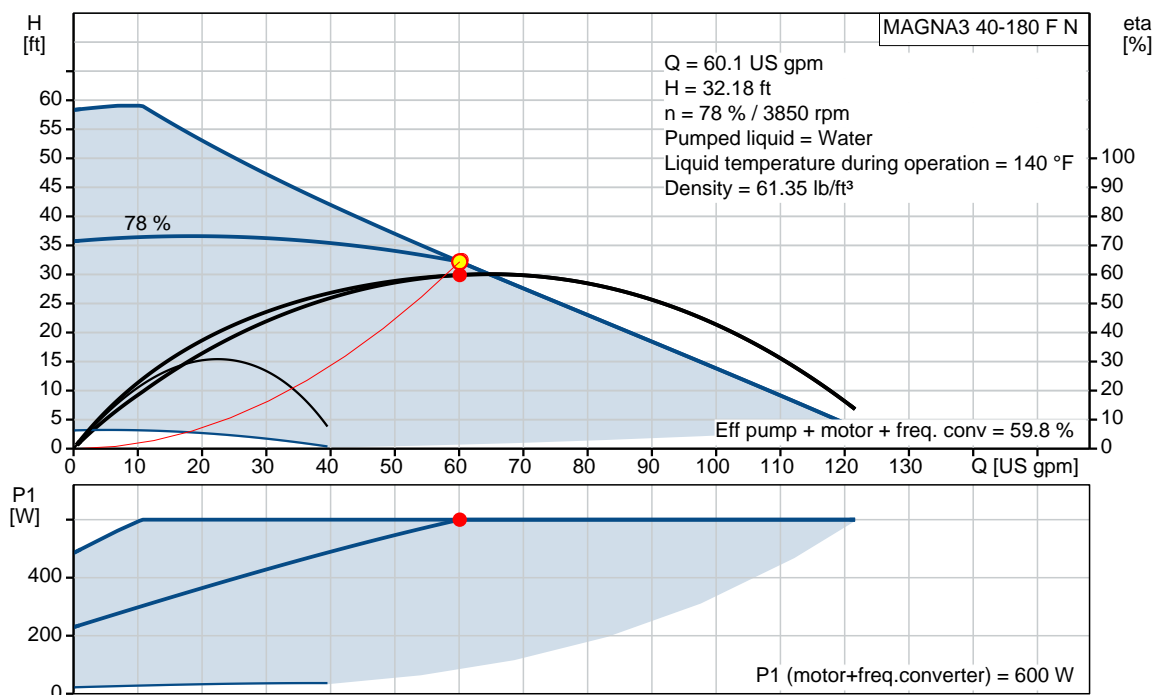
MAGNA3 40-180 F N

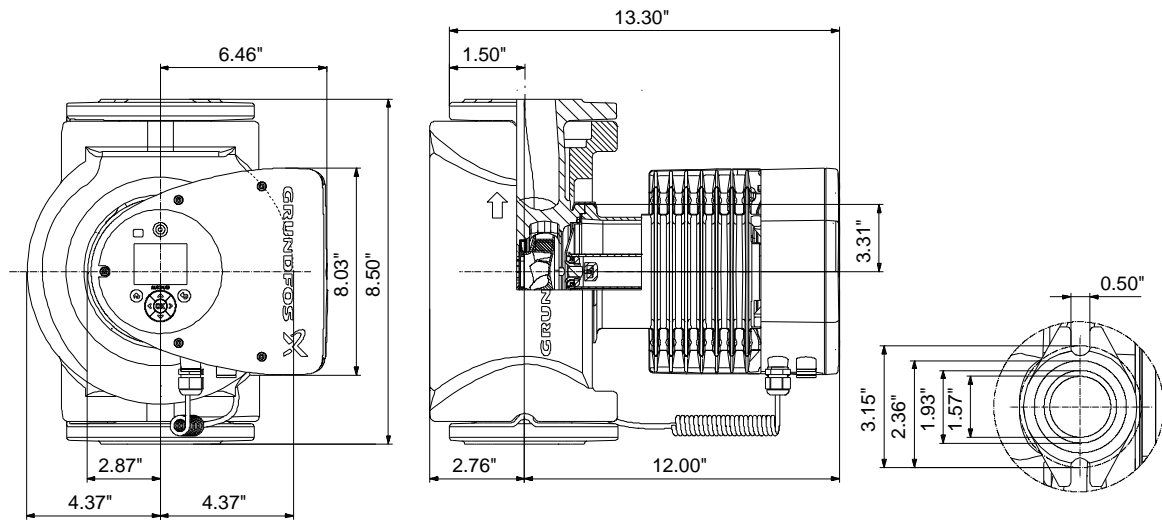


Full range of intelligent, high-efficiency circulators for heating, cooling, ground source heat pump systems and domestic hot water applications

Product photo could vary from the actual product

Conditions of Service	Pump Data	Motor Data
Flow: 60.1 US gpm	Maximum operating pressure: 174.05 psi	P1 max: 16 .. 600 W
Head: 32.18 ft	Liquid temperature range: 14 .. 230 °F	Rated voltage: 208-230 V
Efficiency: 59.8 %	Maximum ambient temperature: 104 °F	Main frequency: 60 Hz
Liquid: Water	Approvals: 98544604	Enclosure class: X4D
Temperature: 140 °F	Flange standard: GF	Insulation class: F
NPSH required: ft	Pipe connection: GF15/26/40/43	
Viscosity:	Product number: 98126838	
Specific Gravity: 0.985		

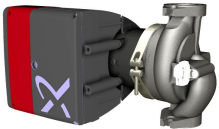




Materials:

Pump housing: Stainless steel
EN 1.4308
ASTM 351 CF8

Impeller: PES 30%GF

Count	Description
1	<p>MAGNA3 40-180 F N</p>  <p>Product No.: 98126838</p> <p>MAGNA3 – More than a pump With its unrivalled efficiency, all-encompassing range and built-in communication capabilities plus functionalities replacing system components, the MAGNA3 is ideal for engineers and specifiers looking to create high-performance systems for buildings.</p> <p>This pump in the Grundfos Master Class will fit both heating and cooling applications perfectly, making it the obvious choice for almost any building project – old or new.</p> <p>The MAGNA3 is of the canned-rotor type, i.e. pump and motor form an integral unit without shaft seal and with only two gaskets for sealing. The bearings are lubricated by the pumped liquid. The innovative clamp with only one screw enables easy repositioning of the pump head. The MAGNA3 is a pump with no maintenance requirements and with extremely low Life Cycle Cost.</p> <p>The pump is characterised by the following:</p> <ul style="list-style-type: none"> • controller integrated in the control box • control panel with TFT display on the control box • control box prepared for optional CIM modules • built-in differential-pressure and temperature sensor • cast-iron pump housing (depending on model) • carbon-fiber-reinforced composite rotor can • stainless-steel bearing plate and rotor cladding • aluminium alloy stator housing • air-cooled power electronics <p>The MAGNA3 is a single-phase pump.</p> <p>Characteristic features</p> <ul style="list-style-type: none"> • AUTOADAPT. • FLOWADAPT and FLOWLIMIT (more than a pump function as it reduces the need for pump throttling valves). • Proportional-pressure control. • Constant-pressure control. • Constant-temperature control. • Constant-curve duty. • Max. or min. curve duty. • Automatic Night Setback. • No external motor protection required. • Insulating shells supplied with single-head pumps for heating systems. • Large temperature range where the liquid temperature and the ambient temperature are independent of each other. <p>Communication The MAGNA3 enables communication via the following:</p>



Company name: Hurley Engineering

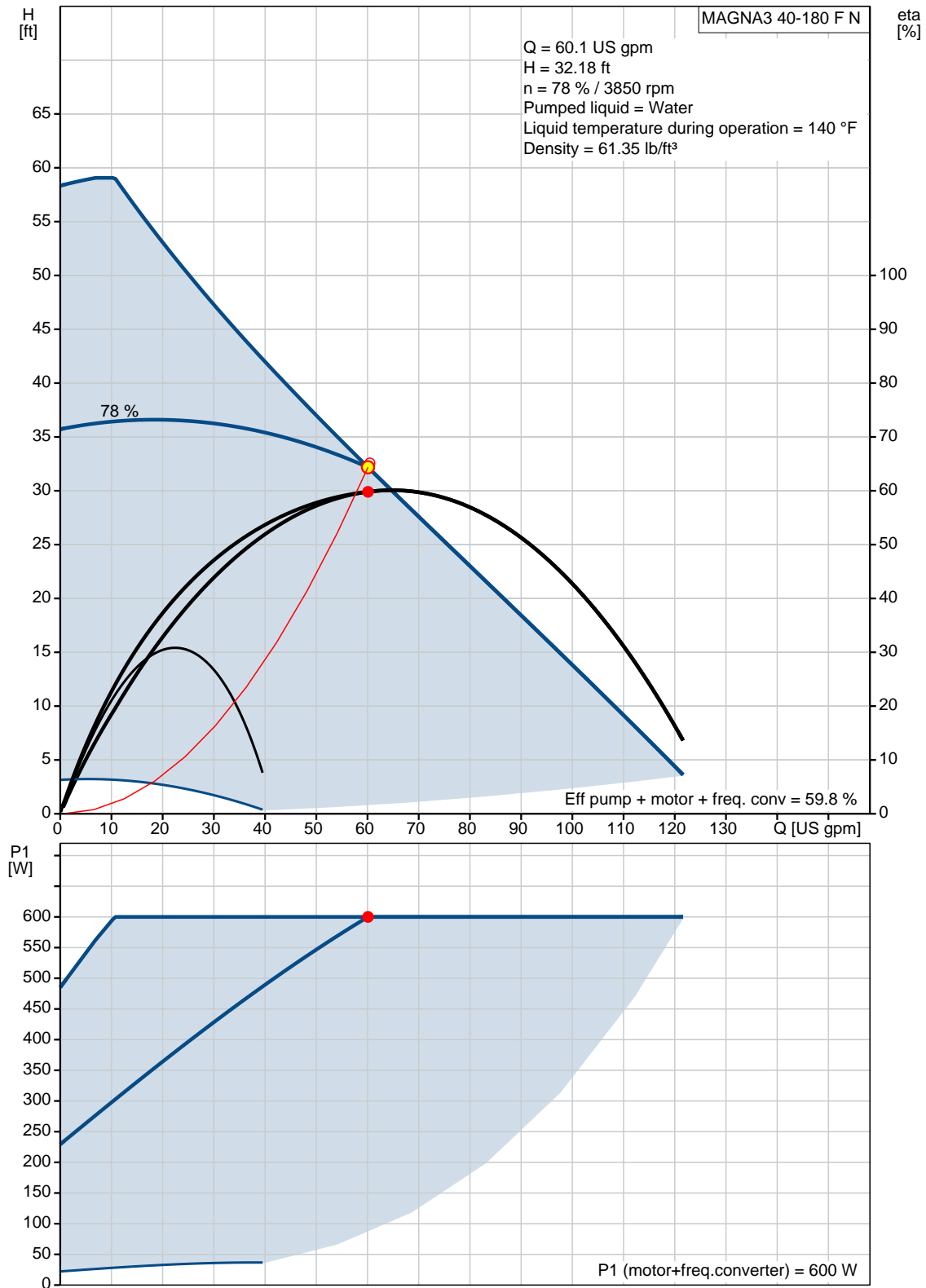
Created by:

Phone:

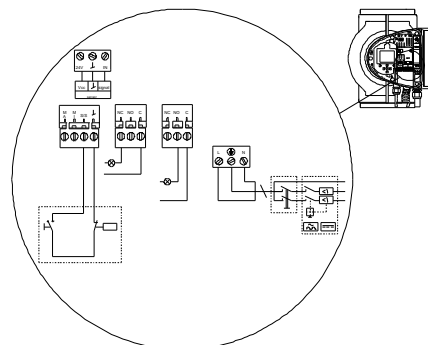
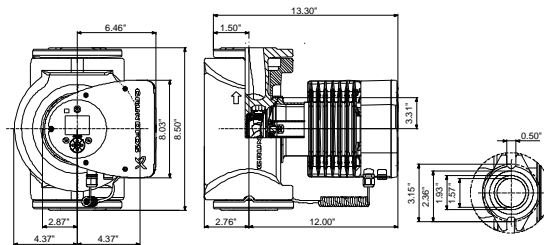
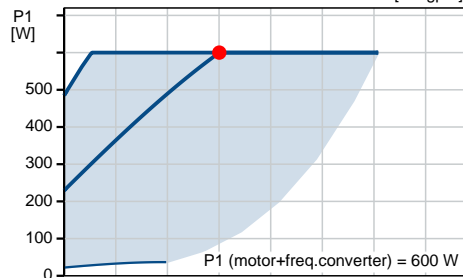
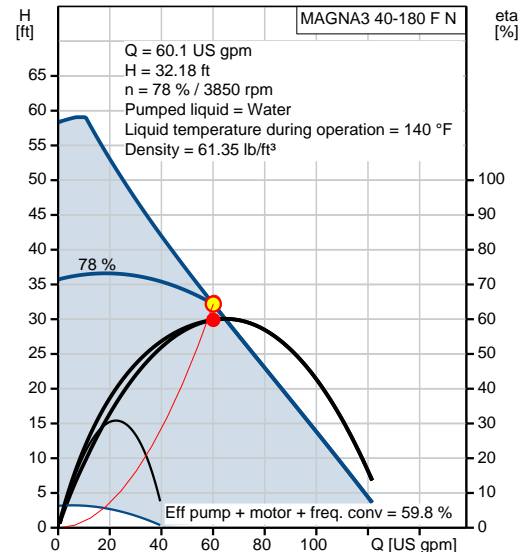
Date: 3/19/2020

Count	Description																																																								
	<ul style="list-style-type: none">• wireless Grundfos GO Remote• fieldbus communication via CIM modules• digital inputs• relay outputs• analog input (more than a pump function as heat energy meter) <p>Motor and electronic controller</p> <p>The MAGNA3 incorporates a 4-pole synchronous, permanent-magnet motor (PM motor). This motor type is characterised by higher efficiency than a conventional asynchronous squirrel-cage motor.</p> <p>The pump speed is controlled by an integrated frequency converter.</p> <p>A differential-pressure and temperature sensor is incorporated in the pump.</p> <p>Liquid:</p> <table><tr><td>Pumped liquid:</td><td>Water</td></tr><tr><td>Liquid temperature range:</td><td>14 .. 230 °F</td></tr><tr><td>Selected liquid temperature:</td><td>140 °F</td></tr><tr><td>Density:</td><td>61.35 lb/ft³</td></tr></table> <p>Technical:</p> <table><tr><td>Actual calculated flow:</td><td>60.1 US gpm</td></tr><tr><td>Resulting head of the pump:</td><td>32.18 ft</td></tr><tr><td>TF class:</td><td>110</td></tr><tr><td>Approvals on nameplate:</td><td>98544604</td></tr></table> <p>Materials:</p> <table><tr><td>Pump housing:</td><td>Stainless steel EN 1.4308 ASTM 351 CF8</td></tr><tr><td>Impeller:</td><td>PES 30%GF</td></tr></table> <p>Installation:</p> <table><tr><td>Range of ambient temperature:</td><td>32 .. 104 °F</td></tr><tr><td>Maximum operating pressure:</td><td>174.05 psi</td></tr><tr><td>Flange standard:</td><td>GF</td></tr><tr><td>Pipe connection:</td><td>GF15/26/40/43</td></tr><tr><td>Pressure stage:</td><td>PN12</td></tr><tr><td>Port-to-port length:</td><td>8 9/16 in</td></tr></table> <p>Electrical data:</p> <table><tr><td>Power input - P1:</td><td>16 .. 600 W</td></tr><tr><td>Main frequency:</td><td>60 Hz</td></tr><tr><td>Rated voltage:</td><td>1 x 208-230 V</td></tr><tr><td>Maximum current consumption:</td><td>0.18 .. 2.65 A</td></tr><tr><td>Enclosure class (IEC 34-5):</td><td>X4D</td></tr><tr><td>Insulation class (IEC 85):</td><td>F</td></tr></table> <p>Others:</p> <table><tr><td>Energy (EEI):</td><td>0.19</td></tr><tr><td>Net weight:</td><td>31.9 lb</td></tr><tr><td>Gross weight:</td><td>35.2 lb</td></tr><tr><td>Shipping volume:</td><td>1060 ft³</td></tr><tr><td>Country of origin:</td><td>US</td></tr><tr><td>Custom tariff no.:</td><td>8413.70.2005</td></tr></table>	Pumped liquid:	Water	Liquid temperature range:	14 .. 230 °F	Selected liquid temperature:	140 °F	Density:	61.35 lb/ft³	Actual calculated flow:	60.1 US gpm	Resulting head of the pump:	32.18 ft	TF class:	110	Approvals on nameplate:	98544604	Pump housing:	Stainless steel EN 1.4308 ASTM 351 CF8	Impeller:	PES 30%GF	Range of ambient temperature:	32 .. 104 °F	Maximum operating pressure:	174.05 psi	Flange standard:	GF	Pipe connection:	GF15/26/40/43	Pressure stage:	PN12	Port-to-port length:	8 9/16 in	Power input - P1:	16 .. 600 W	Main frequency:	60 Hz	Rated voltage:	1 x 208-230 V	Maximum current consumption:	0.18 .. 2.65 A	Enclosure class (IEC 34-5):	X4D	Insulation class (IEC 85):	F	Energy (EEI):	0.19	Net weight:	31.9 lb	Gross weight:	35.2 lb	Shipping volume:	1060 ft³	Country of origin:	US	Custom tariff no.:	8413.70.2005
Pumped liquid:	Water																																																								
Liquid temperature range:	14 .. 230 °F																																																								
Selected liquid temperature:	140 °F																																																								
Density:	61.35 lb/ft³																																																								
Actual calculated flow:	60.1 US gpm																																																								
Resulting head of the pump:	32.18 ft																																																								
TF class:	110																																																								
Approvals on nameplate:	98544604																																																								
Pump housing:	Stainless steel EN 1.4308 ASTM 351 CF8																																																								
Impeller:	PES 30%GF																																																								
Range of ambient temperature:	32 .. 104 °F																																																								
Maximum operating pressure:	174.05 psi																																																								
Flange standard:	GF																																																								
Pipe connection:	GF15/26/40/43																																																								
Pressure stage:	PN12																																																								
Port-to-port length:	8 9/16 in																																																								
Power input - P1:	16 .. 600 W																																																								
Main frequency:	60 Hz																																																								
Rated voltage:	1 x 208-230 V																																																								
Maximum current consumption:	0.18 .. 2.65 A																																																								
Enclosure class (IEC 34-5):	X4D																																																								
Insulation class (IEC 85):	F																																																								
Energy (EEI):	0.19																																																								
Net weight:	31.9 lb																																																								
Gross weight:	35.2 lb																																																								
Shipping volume:	1060 ft³																																																								
Country of origin:	US																																																								
Custom tariff no.:	8413.70.2005																																																								

98126838 MAGNA3 40-180 F N 60 Hz



Description	Value
General information:	
Product name:	MAGNA3 40-180 F N
Product No.:	98126838
EAN:	5710629500007
	5710629500007
Technical:	
Actual calculated flow:	60.1 US gpm
Resulting head of the pump:	32.18 ft
Head max:	59.06 ft
TF class:	110
Approvals on nameplate:	98544604
Model:	D
Materials:	
Pump housing:	Stainless steel
	EN 1.4308
	ASTM 351 CF8
Impeller:	PES 30%GF
Installation:	
Range of ambient temperature:	32 .. 104 °F
Maximum operating pressure:	174.05 psi
Flange standard:	GF
Pipe connection:	GF15/26/40/43
Pressure stage:	PN12
Port-to-port length:	8 9/16 in
Liquid:	
Pumped liquid:	Water
Liquid temperature range:	14 .. 230 °F
Selected liquid temperature:	140 °F
Density:	61.35 lb/ft³
Electrical data:	
Power input - P1:	16 .. 600 W
Main frequency:	60 Hz
Rated voltage:	1 x 208-230 V
Maximum current consumption:	0.18 .. 2.65 A
Enclosure class (IEC 34-5):	X4D
Insulation class (IEC 85):	F
Others:	
Energy (EEI):	0.19
Net weight:	31.9 lb
Gross weight:	35.2 lb
Shipping volume:	1060 ft³
Country of origin:	US
Custom tariff no.:	8413.70.2005

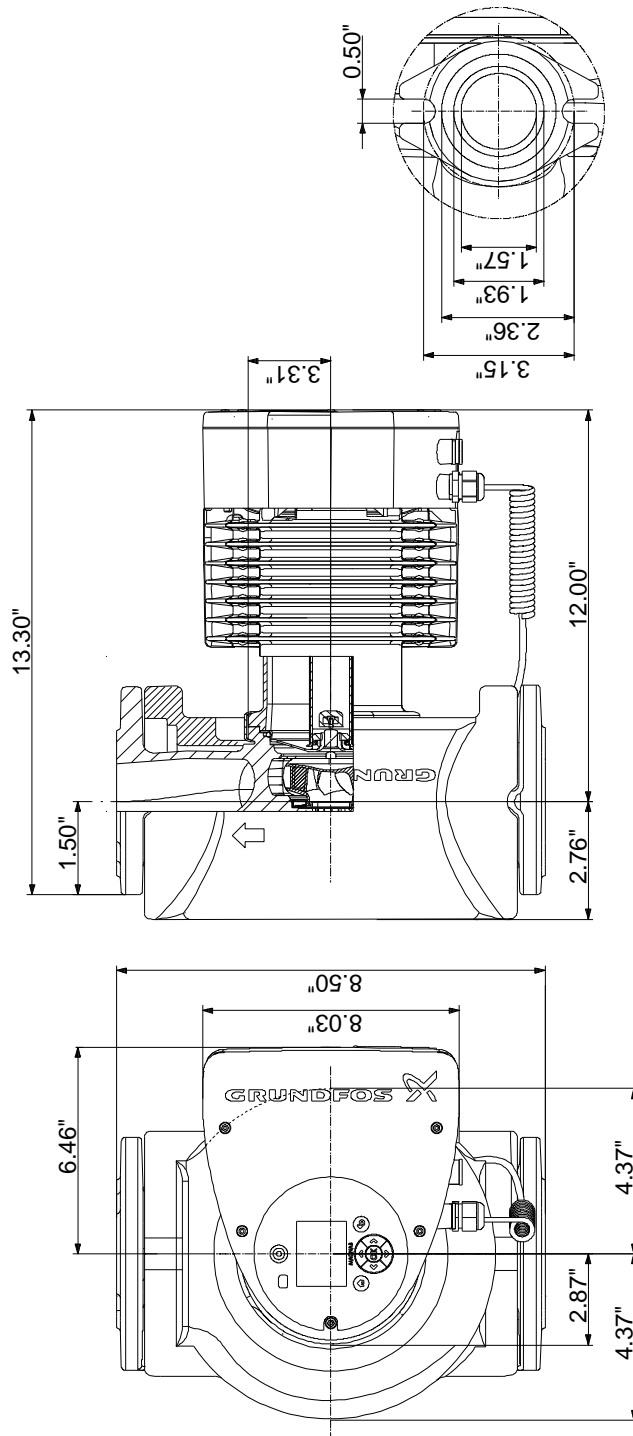




Company name: Hurley Engineering
Created by:
Phone:

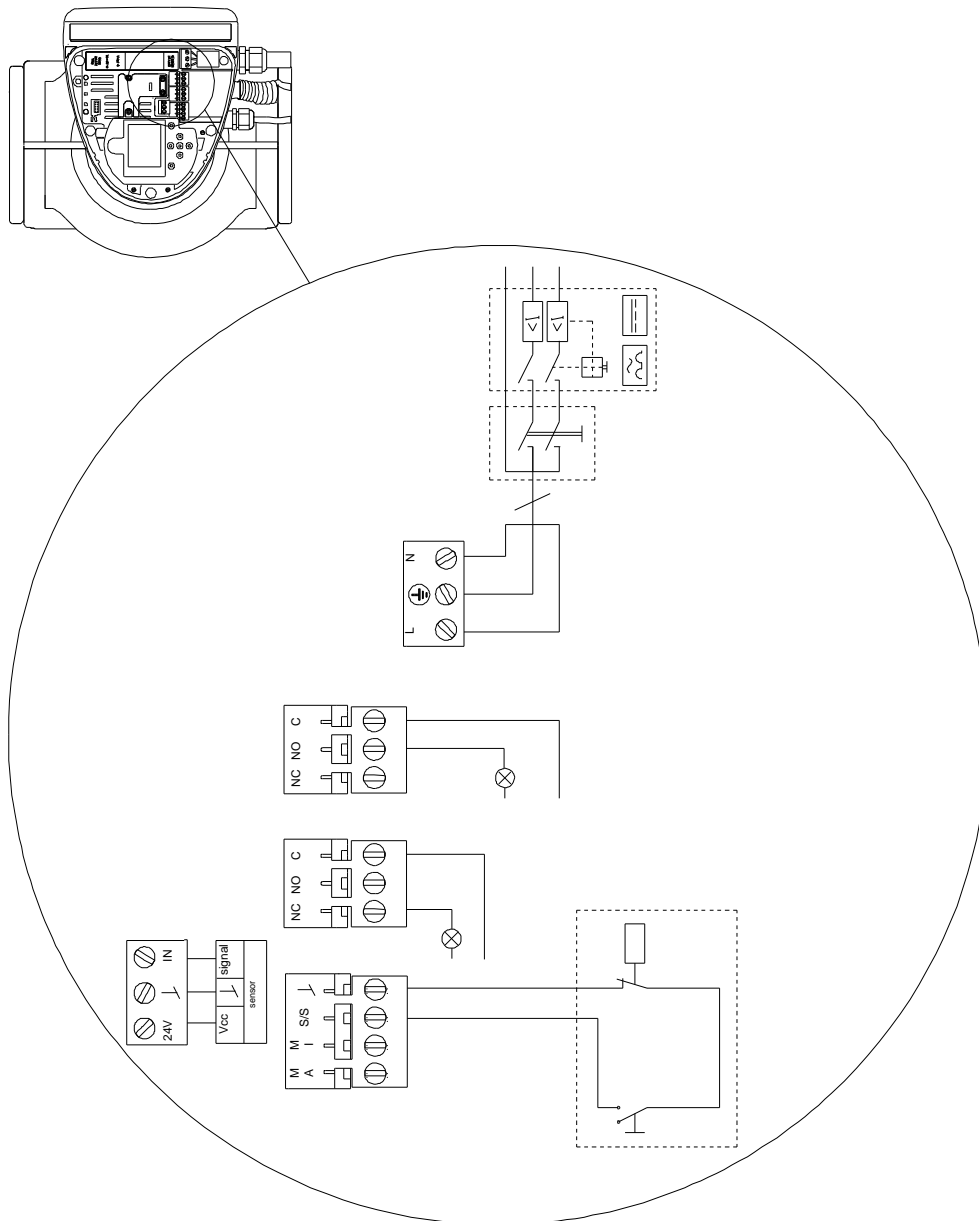
Date: 3/19/2020

98126838 MAGNA3 40-180 F N 60 Hz



Note! All units are in [in] unless otherwise stated.
Disclaimer: This simplified dimensional drawing does not show all details.

98126838 MAGNA3 40-180 F N 60 Hz



All units are [in] unless otherwise presented.