

PROJECT:	Magna-3	UNIT TAG:	_____	QUANTITY:	1
REPRESENTATIVE:	Hurley Engineering	TYPE OF SERVICE:	Cast Iron Pump Configuration	DATE:	_____
ENGINEER:	TBD	SUBMITTED BY:	Devin Carle	DATE:	_____
CONTRACTOR:	TBD	APPROVED BY:	_____	DATE:	_____
		ORDER NO.:	_____	DATE:	_____

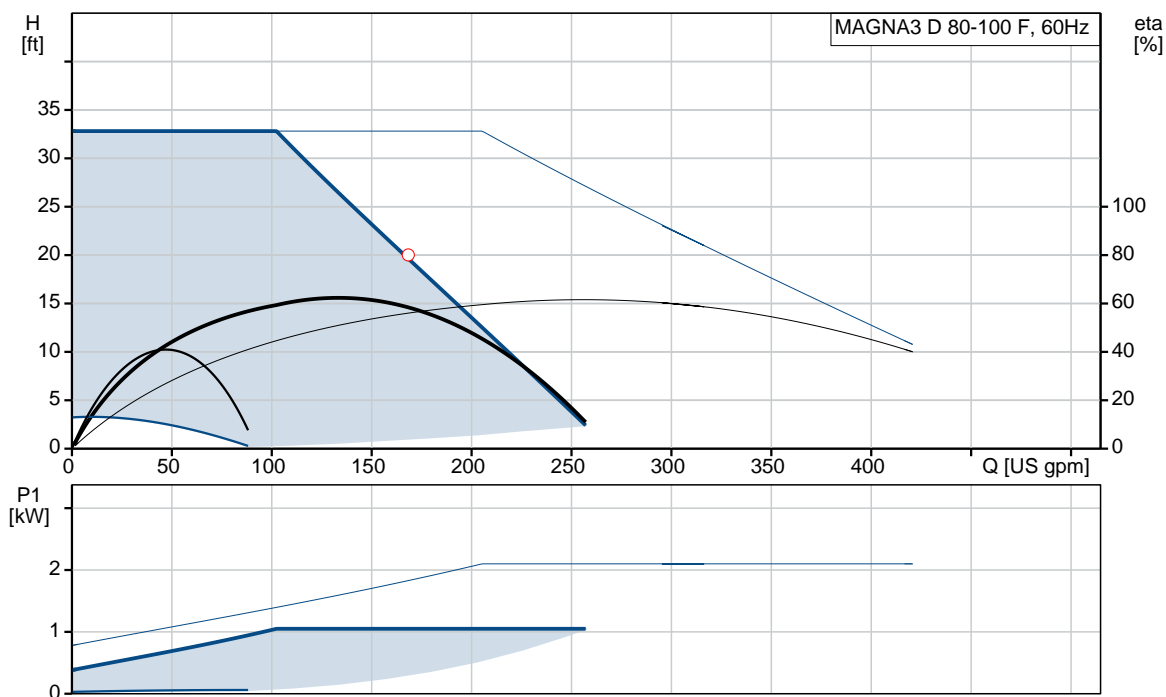
### MAGNA3 D 80-100 F

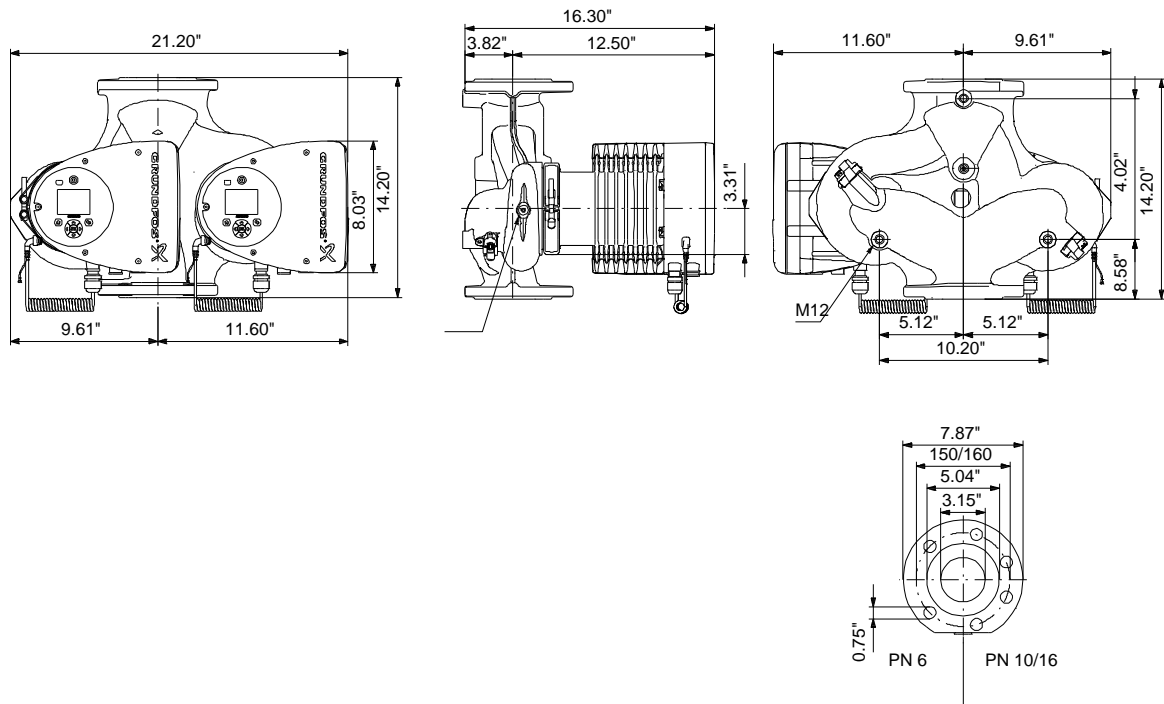


The newest high-end circulator solution, with a large number of electronically controlled operation features, far exceeding the demands from the EuP directive.

Product photo could vary from the actual product

Conditions of Service	Pump Data	Motor Data
Flow: _____	Maximum operating pressure: 174.05 psi	P1 max: 32 .. 1050 W
Head: _____	Liquid temperature range: 14 .. 230 °F	Rated voltage: 208-230 V
Efficiency: _____	Maximum ambient temperature: 104 °F	Main frequency: 60 Hz
Liquid: Water	Approvals: 98544605	Enclosure class: X4D
Temperature: 140 °F	Flange standard: GF	Insulation class: F
NPSH required: ft	Pipe connection: GF80	
Viscosity: _____	Product number: 98126864	
Specific Gravity: 0.985		






**Materials:**

Pump housing: Cast iron  
 EN-GJL-250  
 ASTM A48-250B

Impeller: PES 30%GF

Count	Description
1	<p><b>MAGNA3 D 80-100 F</b></p>  <p>Product photo could vary from the actual product</p> <p>Product No.: <a href="#">98126864</a></p> <p><b>MAGNA3 – More than a pump</b> With its unrivalled efficiency, all-encompassing range and built-in communication capabilities plus functionalities replacing system components, the MAGNA3 is ideal for engineers and specifiers looking to create high-performance systems for buildings.</p> <p>This pump in the Grundfos Master Class will fit both heating and cooling applications perfectly, making it the obvious choice for almost any building project – old or new.</p> <p>The MAGNA3 is of the canned-rotor type, i.e. pump and motor form an integral unit without shaft seal and with only two gaskets for sealing. The bearings are lubricated by the pumped liquid. The innovative clamp with only one screw enables easy repositioning of the pump head. The MAGNA3 is a pump with no maintenance requirements and with extremely low Life Cycle Cost.</p> <p>The pump is characterised by the following:</p> <ul style="list-style-type: none"> <li>• controller integrated in the control box</li> <li>• control panel with TFT display on the control box</li> <li>• control box prepared for optional CIM modules</li> <li>• built-in differential-pressure and temperature sensor</li> <li>• cast-iron pump housing (depending on model)</li> <li>• carbon-fiber-reinforced composite rotor can</li> <li>• stainless-steel bearing plate and rotor cladding</li> <li>• aluminium alloy stator housing</li> <li>• air-cooled power electronics</li> </ul> <p>The MAGNA3 is a single-phase pump.</p> <p><b>Characteristic features</b></p> <ul style="list-style-type: none"> <li>• AUTOADAPT.</li> <li>• FLOWADAPT and FLOWLIMIT (more than a pump function as it reduces the need for pump throttling valves).</li> <li>• Proportional-pressure control.</li> <li>• Constant-pressure control.</li> <li>• Constant-temperature control.</li> <li>• Constant-curve duty.</li> <li>• Max. or min. curve duty.</li> <li>• Automatic Night Setback.</li> <li>• No external motor protection required.</li> <li>• Insulating shells supplied with single-head pumps for heating systems.</li> </ul>



Company name: Hurley Engineering

Created by:

Phone:

Date: 3/19/2020

Count	Description																																														
	<ul style="list-style-type: none"><li>• Large temperature range where the liquid temperature and the ambient temperature are independent of each other.</li></ul> <p>Communication</p> <p>The MAGNA3 enables communication via the following:</p> <ul style="list-style-type: none"><li>• wireless Grundfos GO Remote</li><li>• fieldbus communication via CIM modules</li><li>• digital inputs</li><li>• relay outputs</li><li>• analog input (more than a pump function as heat energy meter)</li></ul> <p>Motor and electronic controller</p> <p>The MAGNA3 incorporates a 4-pole synchronous, permanent-magnet motor (PM motor). This motor type is characterised by higher efficiency than a conventional asynchronous squirrel-cage motor.</p> <p>The pump speed is controlled by an integrated frequency converter.</p> <p>A differential-pressure and temperature sensor is incorporated in the pump.</p> <p><b>Liquid:</b></p> <table><tr><td>Pumped liquid:</td><td>Water</td></tr><tr><td>Liquid temperature range:</td><td>14 .. 230 °F</td></tr><tr><td>Selected liquid temperature:</td><td>140 °F</td></tr><tr><td>Density:</td><td>61.35 lb/ft³</td></tr></table> <p><b>Technical:</b></p> <table><tr><td>Rated flow:</td><td>142 US gpm</td></tr><tr><td>Rated head:</td><td>24.28 ft</td></tr><tr><td>TF class:</td><td>110</td></tr><tr><td>Approvals on nameplate:</td><td>98544605</td></tr></table> <p><b>Materials:</b></p> <table><tr><td>Pump housing:</td><td>Cast iron EN-GJL-250 ASTM A48-250B</td></tr><tr><td>Impeller:</td><td>PES 30%GF</td></tr></table> <p><b>Installation:</b></p> <table><tr><td>Range of ambient temperature:</td><td>32 .. 104 °F</td></tr><tr><td>Maximum operating pressure:</td><td>174.05 psi</td></tr><tr><td>Flange standard:</td><td>GF</td></tr><tr><td>Pipe connection:</td><td>GF80</td></tr><tr><td>Pressure stage:</td><td>PN12</td></tr><tr><td>Port-to-port length:</td><td>14 3/16 in</td></tr></table> <p><b>Electrical data:</b></p> <table><tr><td>Power input - P1:</td><td>32 .. 1050 W</td></tr><tr><td>Main frequency:</td><td>60 Hz</td></tr><tr><td>Rated voltage:</td><td>1 x 208-230 V</td></tr><tr><td>Maximum current consumption:</td><td>0.32 .. 4.81 A</td></tr><tr><td>Enclosure class (IEC 34-5):</td><td>X4D</td></tr><tr><td>Insulation class (IEC 85):</td><td>F</td></tr></table> <p><b>Others:</b></p> <table><tr><td>Energy (EEI):</td><td>0.17</td></tr></table>	Pumped liquid:	Water	Liquid temperature range:	14 .. 230 °F	Selected liquid temperature:	140 °F	Density:	61.35 lb/ft³	Rated flow:	142 US gpm	Rated head:	24.28 ft	TF class:	110	Approvals on nameplate:	98544605	Pump housing:	Cast iron EN-GJL-250 ASTM A48-250B	Impeller:	PES 30%GF	Range of ambient temperature:	32 .. 104 °F	Maximum operating pressure:	174.05 psi	Flange standard:	GF	Pipe connection:	GF80	Pressure stage:	PN12	Port-to-port length:	14 3/16 in	Power input - P1:	32 .. 1050 W	Main frequency:	60 Hz	Rated voltage:	1 x 208-230 V	Maximum current consumption:	0.32 .. 4.81 A	Enclosure class (IEC 34-5):	X4D	Insulation class (IEC 85):	F	Energy (EEI):	0.17
Pumped liquid:	Water																																														
Liquid temperature range:	14 .. 230 °F																																														
Selected liquid temperature:	140 °F																																														
Density:	61.35 lb/ft³																																														
Rated flow:	142 US gpm																																														
Rated head:	24.28 ft																																														
TF class:	110																																														
Approvals on nameplate:	98544605																																														
Pump housing:	Cast iron EN-GJL-250 ASTM A48-250B																																														
Impeller:	PES 30%GF																																														
Range of ambient temperature:	32 .. 104 °F																																														
Maximum operating pressure:	174.05 psi																																														
Flange standard:	GF																																														
Pipe connection:	GF80																																														
Pressure stage:	PN12																																														
Port-to-port length:	14 3/16 in																																														
Power input - P1:	32 .. 1050 W																																														
Main frequency:	60 Hz																																														
Rated voltage:	1 x 208-230 V																																														
Maximum current consumption:	0.32 .. 4.81 A																																														
Enclosure class (IEC 34-5):	X4D																																														
Insulation class (IEC 85):	F																																														
Energy (EEI):	0.17																																														

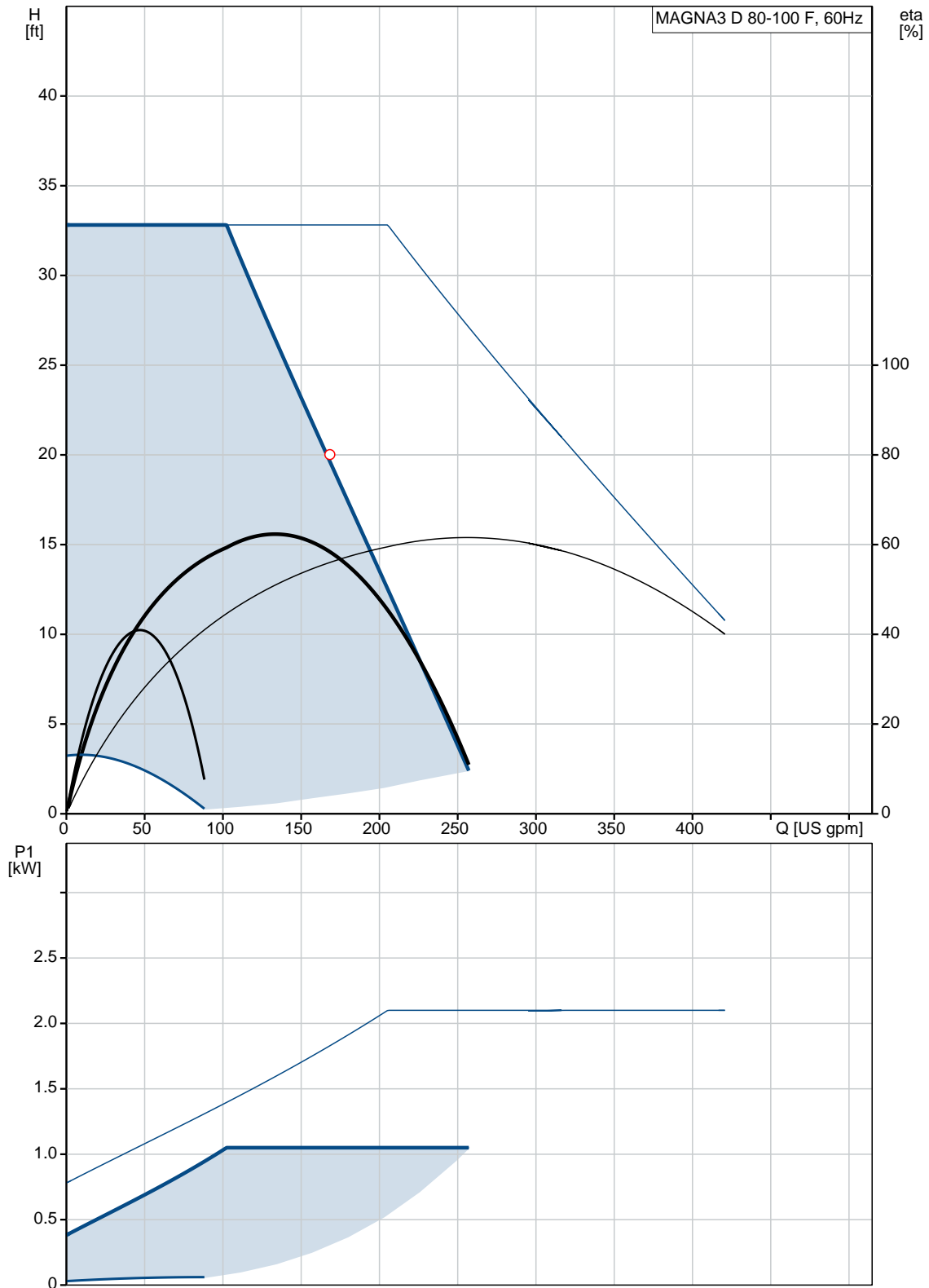


**Company name:** Hurley Engineering  
**Created by:**  
**Phone:**

**Date:** 3/19/2020

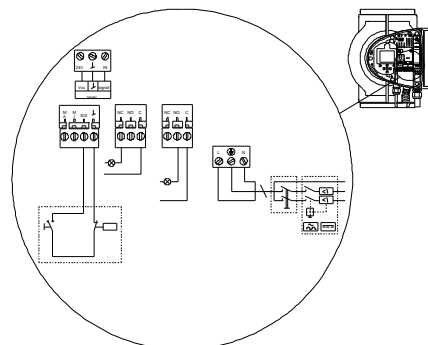
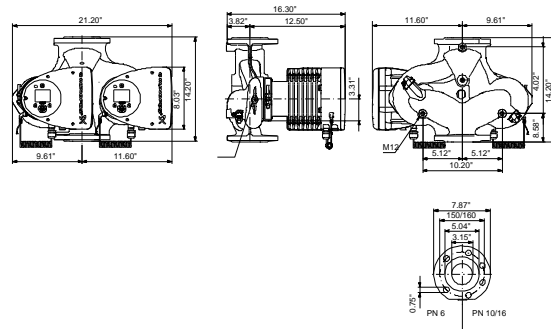
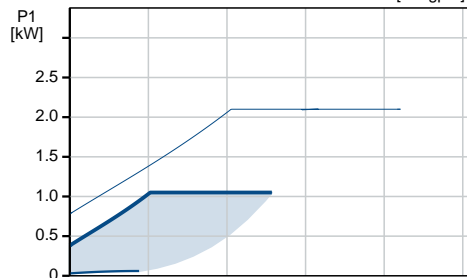
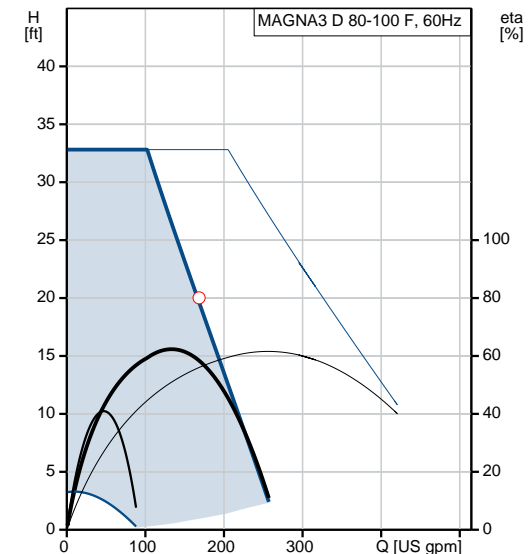
Count	Description
	Net weight: 117 lb Gross weight: 138 lb Shipping volume: 7300 ft³ Country of origin: DE Custom tariff no.: 8413.70.2015

## 98126864 MAGNA3 D 80-100 F 60 Hz

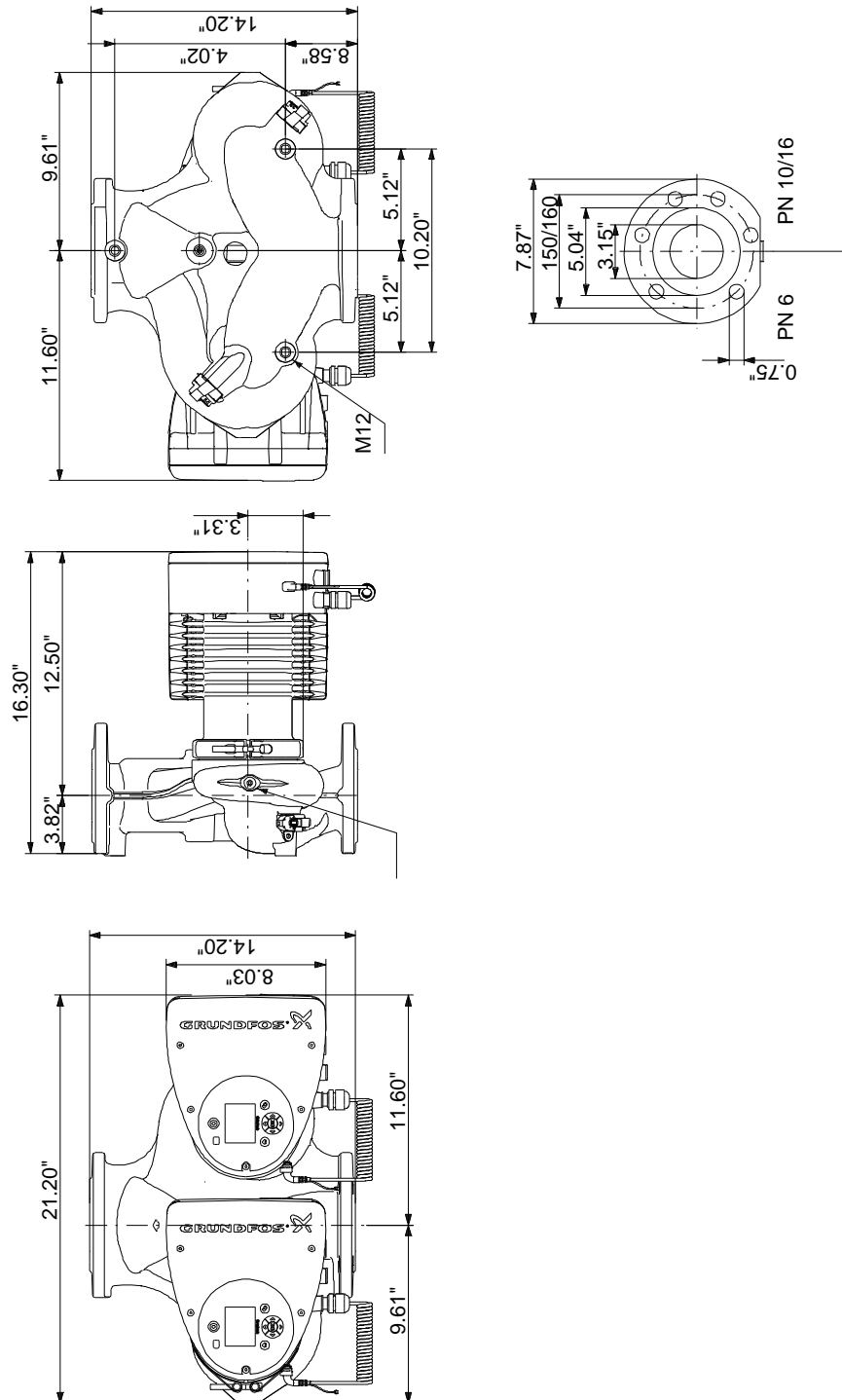


Date: 3/19/2020

Description	Value
<b>General information:</b>	
Product name:	MAGNA3 D 80-100 F
Product No.:	98126864
EAN:	5710629500267
	5710629500267
<b>Technical:</b>	
Rated flow:	142 US gpm
Rated head:	24.28 ft
Head max:	32.81 ft
TF class:	110
Approvals on nameplate:	98544605
Model:	D
<b>Materials:</b>	
Pump housing:	Cast iron
	EN-GJL-250
	ASTM A48-250B
Impeller:	PES 30%GF
<b>Installation:</b>	
Range of ambient temperature:	32 .. 104 °F
Maximum operating pressure:	174.05 psi
Flange standard:	GF
Pipe connection:	GF80
Pressure stage:	PN12
Port-to-port length:	14 3/16 in
<b>Liquid:</b>	
Pumped liquid:	Water
Liquid temperature range:	14 .. 230 °F
Selected liquid temperature:	140 °F
Density:	61.35 lb/ft³
<b>Electrical data:</b>	
Power input - P1:	32 .. 1050 W
Main frequency:	60 Hz
Rated voltage:	1 x 208-230 V
Maximum current consumption:	0.32 .. 4.81 A
Enclosure class (IEC 34-5):	X4D
Insulation class (IEC 85):	F
<b>Others:</b>	
Energy (EEI):	0.17
Net weight:	117 lb
Gross weight:	138 lb
Shipping volume:	7300 ft³
Country of origin:	DE
Custom tariff no.:	8413.70.2015



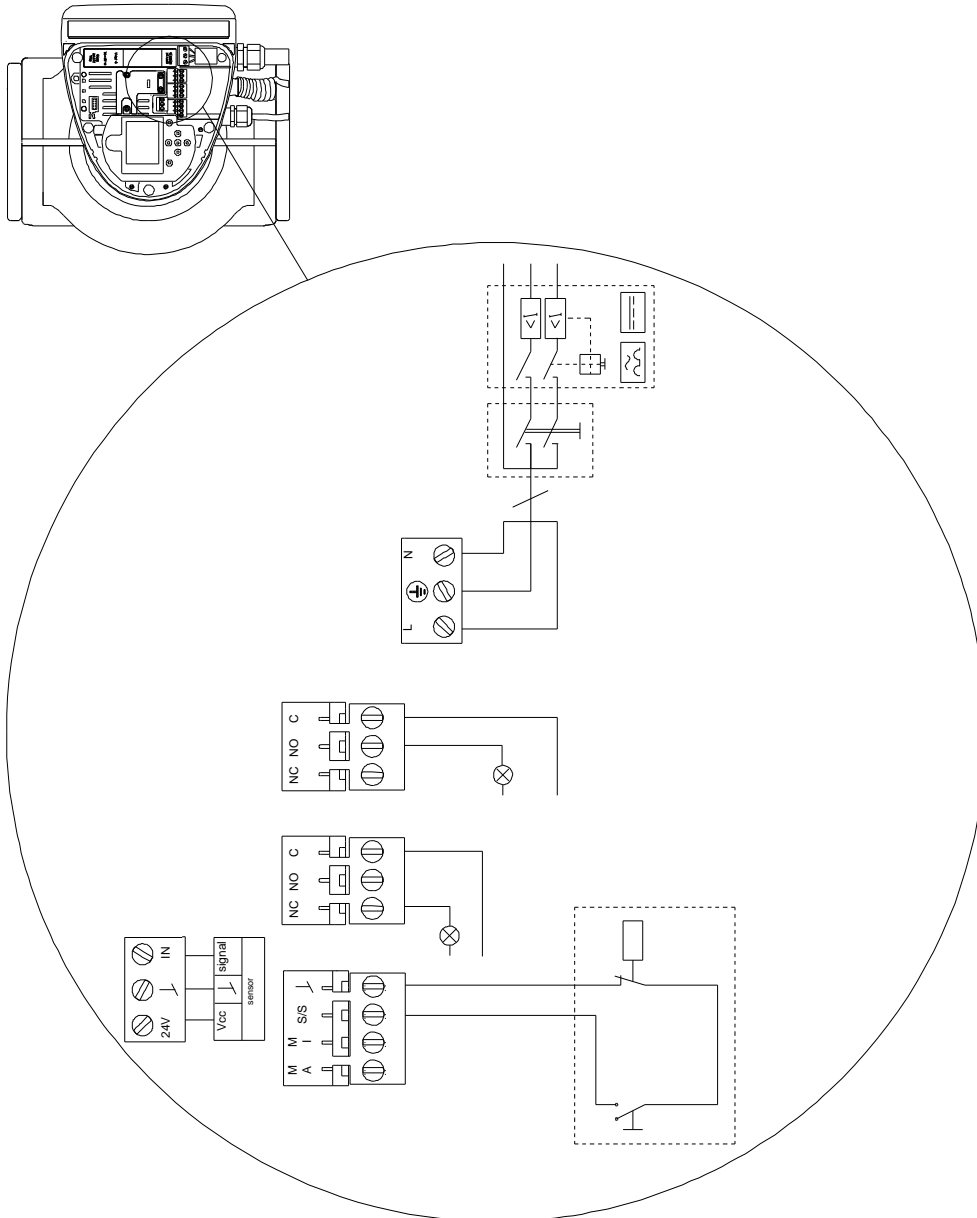
## 98126864 MAGNA3 D 80-100 F 60 Hz



Note! All units are in [in] unless otherwise stated.  
Disclaimer: This simplified dimensional drawing does not show all details.



## 98126864 MAGNA3 D 80-100 F 60 Hz



All units are [in] unless otherwise presented.