

PRODUCT SUMMARY

VERSION 25-1



MIRO-CCG
ROOFTOP SUPPORTS

PIPE SUPPORTS



M-HEX 6

Lightweight PVC pipe support with
strut & pipe saddle (6" length)

4.5" H, 5.2" W, 6" L
Up to 3" pipe



M-HEX 12

Lightweight PVC pipe support with
strut & pipe saddle (12" length)

4.5" H, 5.2" W, 12" L
Up to 3" pipe



M-HEX 36

Lightweight PVC pipe support with
strut & pipe saddle (36" length)

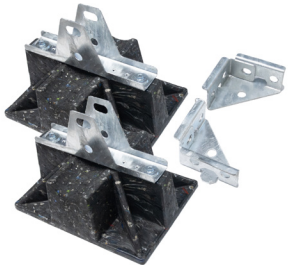
4.5" H, 5.2" W, 36" L
Up to 3" pipe



Snap 'n Roll 3"

Toolless support. Height off roof is adjust-
able from 3" to 8.5" by 1/4" increments.

9" H, 7" W, 10" L



8x11 Base Kit

Set of 2 | 4" H, 8" W, 11" L
Includes brackets & strut



18x18 Base Kit

Set of 2 | 2.5" H, 18" W, 18" L
Includes brackets



VERSASTRUT 6

Lightweight PVC 1-5/8" x 1-5/8" strut
profile with a 4" flange base
(6" length)

1.625" H, 2.875" W, 6" L



VERSASTRUT 12

Lightweight PVC 1-5/8" x 1-5/8" strut
profile with a 4" flange base
(12" length)

1.625" H, 2.875" W, 12" L



VERSASTRUT 36

Lightweight PVC 1-5/8" x 1-5/8" strut
profile with a 4" flange base
(36" length)

1.625" H, 2.875" W, 36" L



RSS3

Lightweight PVC sleeve for sup-
porting rooftop pipes (36" length)

3.5" H, 4.8" W, 36" L



RSS0.5

Lightweight PVC sleeve for sup-
porting rooftop pipes (6" length)

3.5" H, 4.8" W, 6" L



Black Saddle

Lightweight plastic pipe saddle
support

4" H, 10" W, 12" L
Up to 3.5" pipe



8x11 Base Only

Heavy duty recycled plastic base.
Use pipe saddle or attach strut.

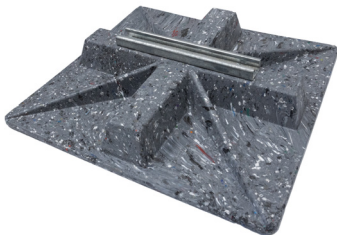
4" H, 8" W, 1" L
Up to 3.25" pipe



8x11 Base Strut 10

Heavy duty recycled plastic base
with 10" attachable strut.

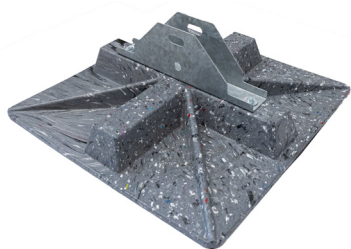
4" H, 8" W, 11" L
Includes 10" strut



18x18 Base Strut 10

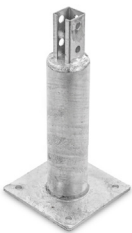
Heavy duty large base with 10"
strut for accessories.

2.5" H, 18" W, 18" L
Includes 10" strut



18x18 Base Support

2.5" H, 18" W, 18" L
Includes Volcano strut support



Stanchion Base 14"

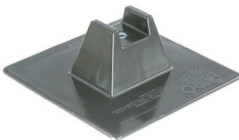
14" H, 8" W, 8" L
Designed to attach 1-5/8" strut



Stanchion Base 18"

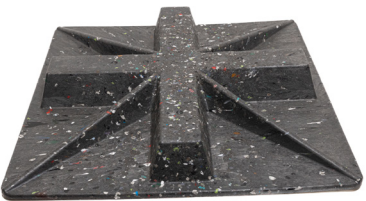
18" H, 8" W, 8" L
Designed to attach 1-5/8" strut

BASE-ONLY



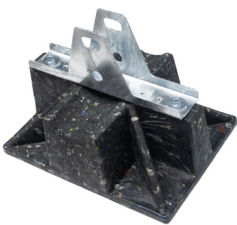
8x8 Base

8" W, 8" L
3/8-16 couple housing



18x18 Base Only

2.5" H, 18" W, 18" L



8x11 Base Support

4" H, 8" W, 11" L
Includes 10" strut & bracket

MECHANICAL & DUCT SUPPORTS



24x32 Mini Split Stand

40" x 33" total footprint
Adjustable to fit different models
Other sizes available upon request



MINI MOUNT™ MMS-18

12.125" H x 20" W
Designed to elevate mechanical units,
like mini split condenser units, above
grade or on a rooftop.



MINI MOUNT™ MMS-18A

12.125" H x 20" W ADJUSTABLE
Designed to elevate mechanical units,
like mini split condenser units, above
grade or on a rooftop.

MECHANICAL & DUCT SUPPORTS



4-DSA

8-18" H, 10-14.75" W



6-DSA

10-24" H, 16-22" W



8-DSA

12-38" H, 18-40" W

ACCESSORIES



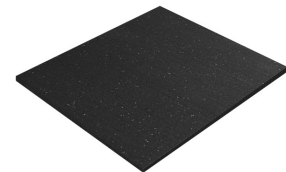
EKON 24x24x2 Pad

2" H, 24" W, 24" L



EKON 24x24x3 Pad

3" H, 24" W, 24" L



12x12 Support Pad

MIRO-CG
ROOFTOP SUPPORTS

MIRO-CG provides affordable solutions for supporting piping on rooftops, including gas pipe, electrical conduit, plumbing pipes, and refrigeration pipes. We also have economical duct supports and AC condensing unit support pads.

If you're interested in our line of specifier-grade rooftop pipe and mechanical supports, crossovers and ramps, and wind and seismic-compliant solutions, please visit **miroind.com**.

Learn more at **MIROCG.COM**.



Scan the QR
code
or visit
mirocg.com
for
additional
product
information.