

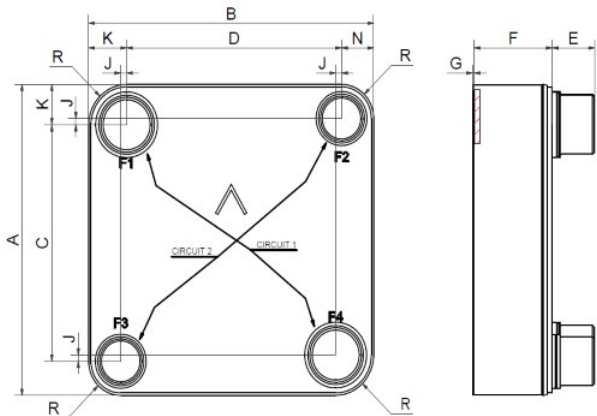


SWEP B30

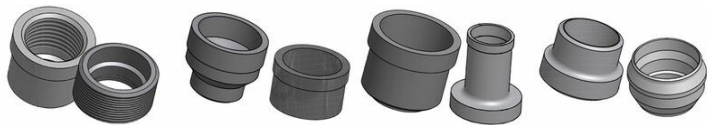
The B30 is an asymmetric cross-flow heat exchanger. It is particularly suitable for gas-to-liquid applications and for tapping tributary flows from main streams. With 2½" piping, it handles water flow of up to 58 m³/h (255 gpm). It can be used as a suction gas heat exchanger in chillers of up to 350 kW, as an after cooler for air compressors of up to 175 kW and as an engine charge air cooler for engines over 1 MW. We have designed the B30 to offer a robustness which is superior to the normal BPHE designs, both in respect to static and cyclic loads.



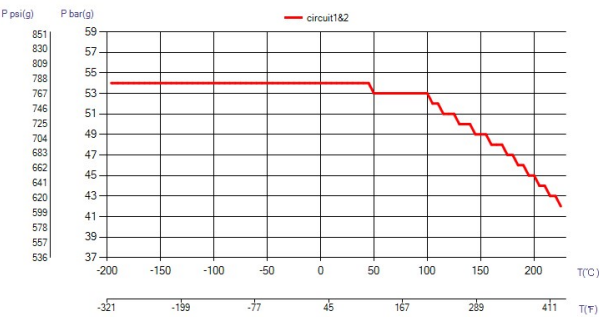
Maximum number of plates (NoP)	301
Max flow	58 m³/h (255.37 gpm)
Channel volume	0.105/0.081 dm³ (0.0037/0.0029 ft³)
Material	316/316L stainless steel plates, copper brazing
Weight excl. connections	5.68+(0.171*NoP) kg 12.53+(0.377*NoP) lb
Max Particle Size (mm)	0.9



#	MM	IN
A	243.50	9.59
B	243.50	9.59
C	166.20	6.54
D	166.50	6.56
F	14,00+2,12*(NoP)	0.55+0.08 *(NoP)
G	2	0.08
J	7.50	0.3
K	42.30	1.67
L	35	1.38
N	34.80	1.37
R	35	1.38
E_1	54	2.13
E_2	27	1.06



Threaded Connection Victaulic Connection Solder Connection Weld Connection



UL Tryck/Temperatur

