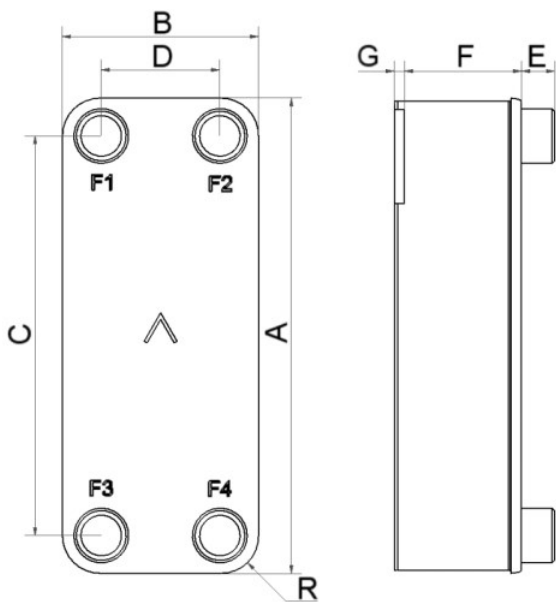


SWEP B65

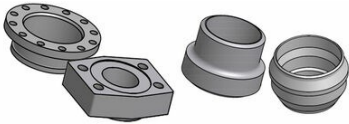
The B65 is the perfect choice for high-capacity applications where the most robust plate heat exchanger is sought. With different plate combinations, it offers a solution for the most demanding industrial and heating applications, and is also a very effective condenser.



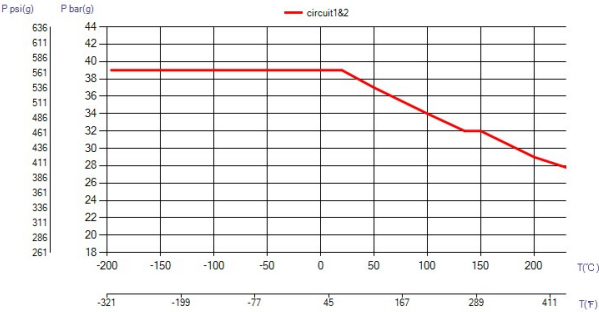
Maximum number of plates (NoP)	361
Max flow	155.5 m³/h (684.65 gpm)
Channel volume	0.599/0.599 dm³ (0.0212/0.0212 ft³)
Material	316/316L stainless steel plates, copper brazing
	0.00+(1.03*NoP) kg
	0.00+(2.271*NoP) lb
Max Particle Size (mm)	1



#	MM	IN
A	864	34.02
B	363	14.29
C	731	28.78
D	231	9.09
F	17,00+2,32*(NoP)	0.67+0.09 *(NoP)
G	0.50	0.02
R	67	2.64
E_1	54	2.13
E_2	112	4.41



Flange Connection Weld Connection



UL Tryck/Temperatur

