

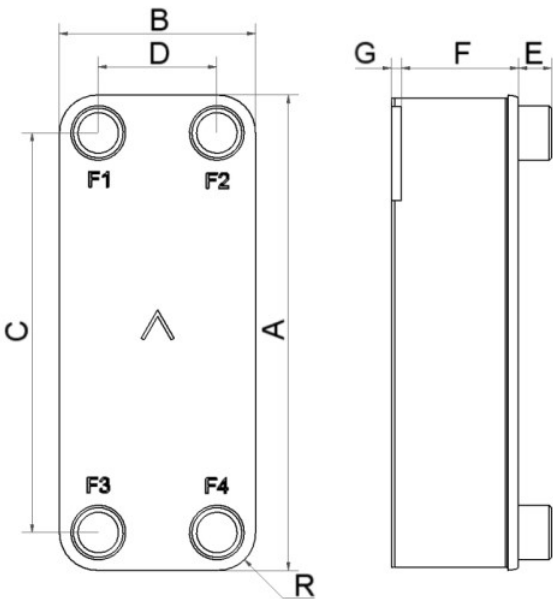


# SWEP B85AS

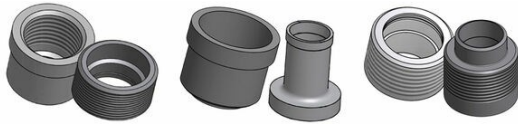
The B85AS is built on the successful 85 platform and adds the advantages of SWEP’s patented AsyMatrix® technology, offering increased thermal performance and reduced pressure drop. The B85 is a high-performance evaporator with higher efficiency than any comparable product.



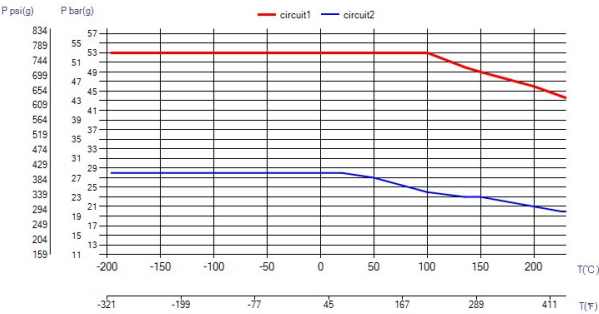
Maximum number of plates (NoP)	160
Max flow	17 m³/h (74.85 gpm)
Channel volume	0.0863/0.0967 dm³ (0.0030/0.0034 ft³)
Material	316 Stainless Steel Plates, Cover Plates in 304 Stainless Steel, Copper Brazing
Weight excl. connections	2.09+(0.1367*NoP) kg 4.60+(0.301*NoP) lb
Max Particle Size (mm)	0.8



#	MM	IN
A	526	20.71
B	119	4.69
C	470	18.5
D	63	2.48
F	4,00+1,84*(NoP)	0.16+0.07 *(NoP)
G	6	0.24
R	23	0.91
E_1	27	1.06
E_2	45	1.77
E_3	20	0.79



Threaded Connection   Solder Connection   Combo Connection



UL Tryck/Temperatur

