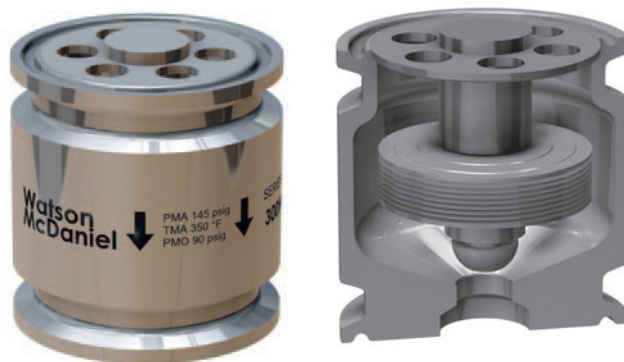


High-Capacity Sanitary

Model	FDA300
Sizes	1 1/2"
Connections	Tri-Clamp
Body Material	Stainless Steel
PMO Max. Operating Pressure	90 PSIG
TMO Max. Operating Temperature	Saturated Steam Temperature
PMA Max. Allowable Pressure	145 PSIG up to 338°F
TMA Max. Allowable Temperature	350°F @ 132 PSIG



Typical Applications

PROCESS: FDA300 Series high-capacity thermostatic clean steam traps are used on clean steam applications, and for condensate drainage on CIP/SIP systems and various process vessels.

How It Works

This trap contains a welded 316L stainless steel thermal element that expands when heated and contracts when cooled. When air and subcooled condensate are present, the trap is in an open discharge position. When steam reaches the trap, the element expands, closing the trap tightly.

Features

- All wetted parts are 316L stainless steel
- Electro-polish finish of 20-25 microinches RA on internal surfaces of body
- Electro-polish finish of 25-32 microinches RA on external surfaces of body
- Operates close to saturation curve to minimize condensate back-up
- Completely self-draining in the vertical downward flow orientation

Sample Specification

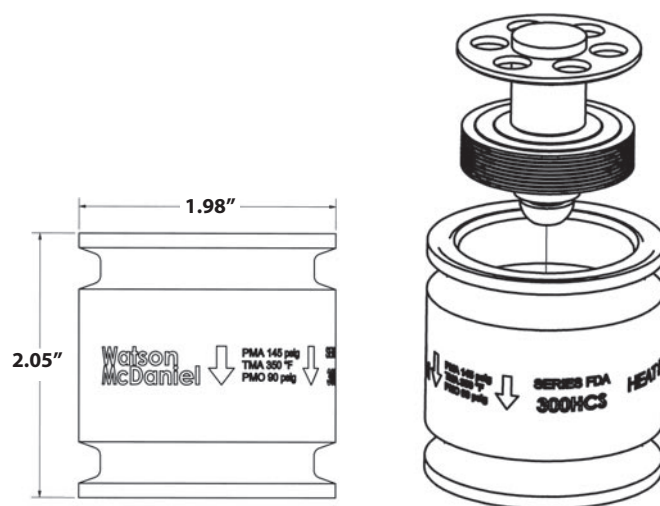
The steam Trap shall be all 316L stainless steel thermostatic type with a balanced pressure bellows that operates close to saturated steam temperatures. Internal body parts shall have an electro-polish finish of 20-25 microinches RA internally and a 25-32 finish externally. The unit shall have a split-body sanitary clamp design for easy maintenance. Trap shall be completely self-draining when mounted vertically.

Installation and Maintenance

This trap is designed for installation in a vertical, downward flow orientation to ensure that the self-draining clean steam requirement is satisfied.

Options

Electropolish to 15 Ra internal or lower is available; Consult factory.



Size/Connection Inlet x Outlet	Model Code	Orifice Size	Weight lbs
1 1/2" TC x TC	FDA300-16-TCTC	0.394	2.25

MATERIALS

Body	Stainless Steel, AISI 316L
Element Plate	Stainless Steel, AISI 316L
Thermal Element	Stainless Steel, AISI 316L
Clamp	Stainless Steel, AISI 304

CAPACITIES — Condensate (lbs/hr)

Model	Orifice (Inches)	Differential Pressure (PSI)					
		5	10	20	50	75	90
FDA300	0.394	216	368	702	2214	4300	5904

Note: Capacities at 9°F below saturated steam temperature