

Steam Traps

Clean Steam Thermostatic Steam Trap

(Repairable)

FDA600

Thermostatic Clean Steam

Model	FDA600
Sizes	1/2", 3/4", 1"
Connections	Tri-clamp, NPT, Tube Weld
Body Material	Stainless Steel
PMO Max. Operating Pressure	110 PSIG
TMO Max. Operating Temperature	Saturated Steam Temperature
PMA Max. Allowable Pressure	145 PSIG up to 338°F
TMA Max. Allowable Temperature	350°F @ 132 PSIG

Typical Applications

DRIP, PROCESS: FDA600 Series thermostatic clean steam traps are used as drip traps on piping runs on clean steam applications and for drainage for CIP/SIP systems and various process vessels.

How It Works

This trap contains a welded 316L stainless steel thermal element that expands when heated and contracts when cooled. When air and subcooled condensate are present, the trap is in an open discharge position. When steam reaches the trap, the element expands, closing the trap tightly.

Features

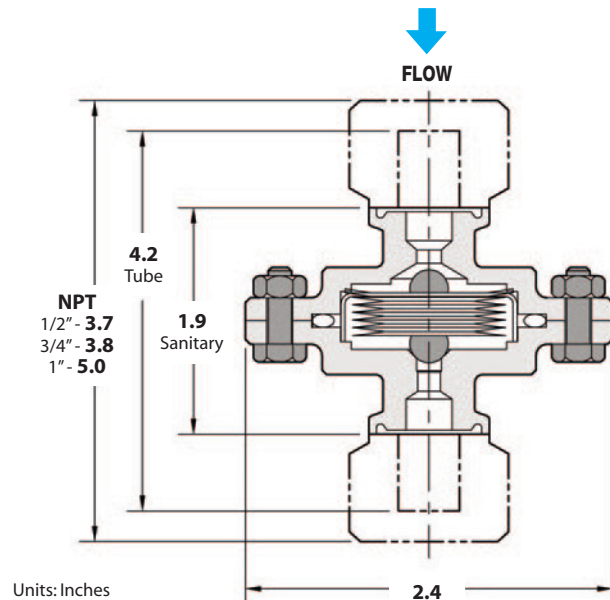
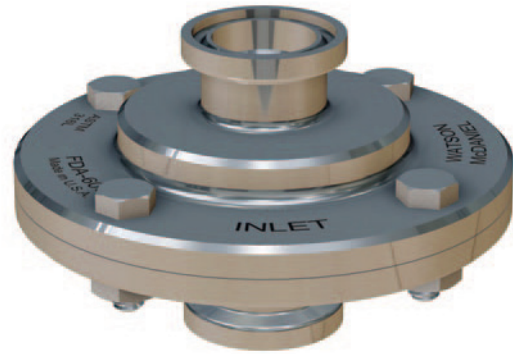
- All wetted parts are 316L stainless steel
- Operates close to saturation curve to minimize condensate back-up
- Completely self-draining in the vertical downward flow orientation

Sample Specification

The Steam Trap shall be all 316L stainless steel thermostatic type with a balanced pressure bellows that operates close to saturated steam temperatures. The unit shall have a split-body design for easy maintenance. Trap shall be completely self-draining when mounted vertically.

Installation and Maintenance

Trap is designed to be installed in a vertical, downward flow orientation to ensure that the self-draining clean steam requirement is satisfied. If purchased with tube weld connections with the intention of welding in-line, the thermal element and gasket must be removed during the welding process or heat damage may occur.



Size/Connection Inlet x Outlet	Model Code	PMO PSI	Weight lbs
1/2" TC x TC	FDA600-12-TCTC	110	1.25
3/4" TC x TC	FDA600-13-TCTC	110	1.25
1" TC x TC	FDA600-14-TCTC	110	1.25
1/2" TC x NPT	FDA600-12-TCNP	110	1.25
3/4" TC x NPT	FDA600-13-TCNP	110	1.25
1" TC x NPT	FDA600-14-TCNP	110	1.25
1/2" NPT x NPT	FDA600-12-NPNP	110	1.25
3/4" NPT x NPT	FDA600-13-NPNP	110	1.25
1" NPT x NPT	FDA600-14-NPNP	110	1.25
1/2" TW x TW	FDA600-12-TWTW	110	1.25

MATERIALS

Body	Stainless Steel, AISI 316L
Thermal Element	Stainless Steel, AISI 316L
O-Ring, FDA Grade	Teflon Coated Silicone/FEP
Nuts & Bolts	Stainless Steel, AISI 316L

CAPACITIES — Condensate (lbs/hr)

Condensate Temp Below Saturation	Differential Pressure (PSI)						
	1	5	10	20	50	75	110
10 °F	32	105	175	290	615	805	1160
20 °F	42	115	225	440	1060	1500	1850
Cold Water	735	1070	1375	1900	3100	3500	4600